



**930F
933F
936F
939F
942F
EXCAVATOR**

ALL NEW
F-SERIES

930F/933F

Engine	B6.7
Net Power	161kW
Operating Weight	31,500 - 35,400kg
Bucket Capacity	1.6m ³

936F/939F/942F

Engine	L9
Net Power	219kW
Operating Weight	38,600 - 44,000kg
Bucket Capacity	2.1m ³



TOUGH WORLD. TOUGH EQUIPMENT.



“ THE BEST MACHINES ARE DESIGNED FOR BALANCE, NOT COMPROMISE... ”

YOUR PERFORMANCE DASHBOARD

Research tells us that 6 key performance areas really matter to you. We'd like to use this performance dashboard to present the real, tough facts about our all New 30 - 42T range.



TOUGHNESS & DURABILITY



POWER & EFFICIENCY



INTELLIGENCE & CONTROL



COMFORT & ERGONOMICS



SAFETY & VISIBILITY



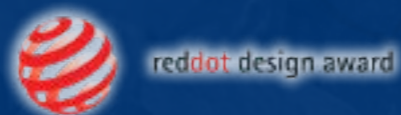
UPTIME & MAINTENANCE

With the All New 30 - 42T range we've built a machine which matches your performance criteria exactly. No compromises, just everything you need. It's not rocket science, it's just customer focus matched with intelligent design.

CUSTOMER DRIVEN DESIGN...

Our customers don't like compromise, nor do we. That's why we do our homework before we start the design process to really understand how our machines are actually owned and operated.

This insight allows us to perfectly balance, the demands of the machine owner and the machine operator but without compromise.



RED DOT AWARD-WINNING DESIGN

Our UK design team were recently recognized with a prestigious Red Dot Award for our new 4180D motor grader recognising its innovation and excellence in product design.

HERE'S THE BIG PICTURE...

ALL NEW F-SERIES

930F-942F EXCAVATOR



POWER & EFFICIENCY

NEW

- 3 new power modes - Power, Standard and Eco

IMPROVED

- Cummins VGT technology engine delivers 5% more torque
- 20% increase on slew torque



TOUGHNESS & DURABILITY

NEW

- Heavier duty undercarriage with bilateral supported upper rollers

IMPROVED

- Longer undercarriages & increased counterweight masses
- Extra strong boom & arm - reduces stress by 25%
- 100% flaw detection



INTELLIGENCE & CONTROL

NEW

- Electro-hydraulic control technology
- Boom float technology
- Attachment flow and pressure control



SAFETY & VISIBILITY

NEW

- 360 degree camera
- Ground level daily inspection

IMPROVED

- Anti-slip tread plates and guard rails



UPTIME & MAINTENANCE

IMPROVED

- 1,000h air filter cycle
- Component wear reduced by 70%

NEW

- 5,000 hour long life oil
- Oil bath pre-cleaner option



COMFORT & ERGONOMICS

NEW

- F-Series Ergonomic cab design
- Intuitive operator interfaces & control

IMPROVED

- Quiet (69dBA) and clean (pressurised environment)

NOW FOR THE DETAIL...



“ NO MATTER WHAT YOU DO, YOU’VE GOT TO TRUST YOUR MACHINE 100% ”



TOUGHNESS AND DURABILITY
DESIGNED TO WORK HARDER, FOR LONGER



DESIGNED TO WORK HARDER, FOR LONGER...

To build machines that can withstand the hardest conditions takes intelligent design, and attention to detail. We know that a machine is only as strong as its weakest point, so every weld, every joint, every component is scrutinized to ensure it passes our rigorous durability tests. **Here's the proof.**



TOUGHNESS AND DURABILITY

1. INCREASED LOAD SUPPORT

- Upper rollers adopt bilateral support to increase the support and reduce wear

3. EXTRA VIGILANCE

- 100% flaw detection ensures every weld is checked to meet our stringent standards.

5. TOUGHER BOOM AND ARM

Finite element analysis proves the load efficiency and toughness of our boom and arm, but we go further to reduce stress by **25%**.

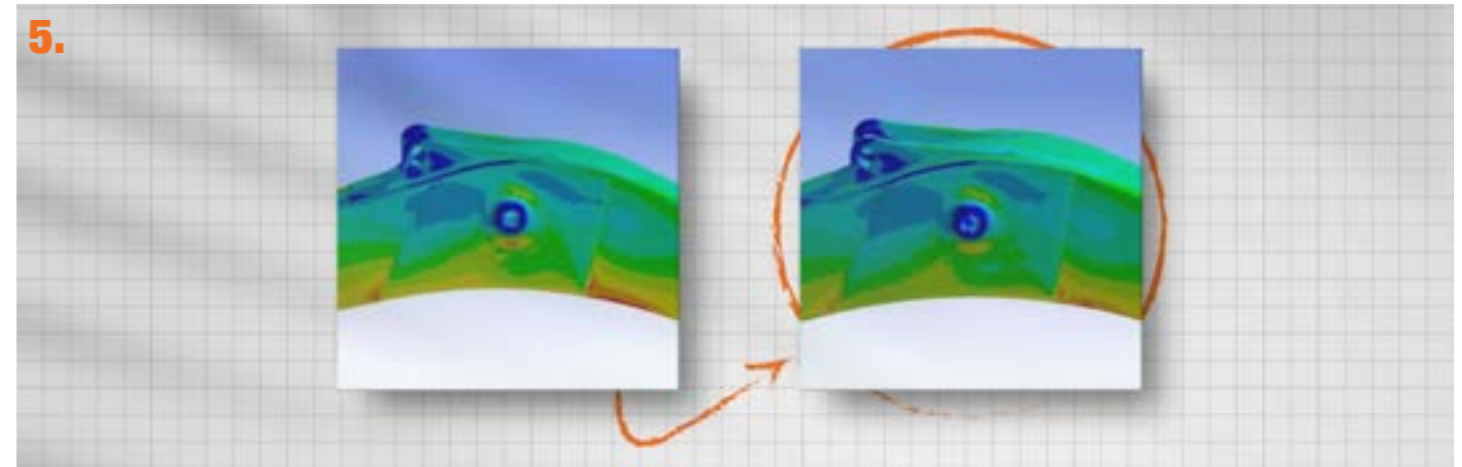
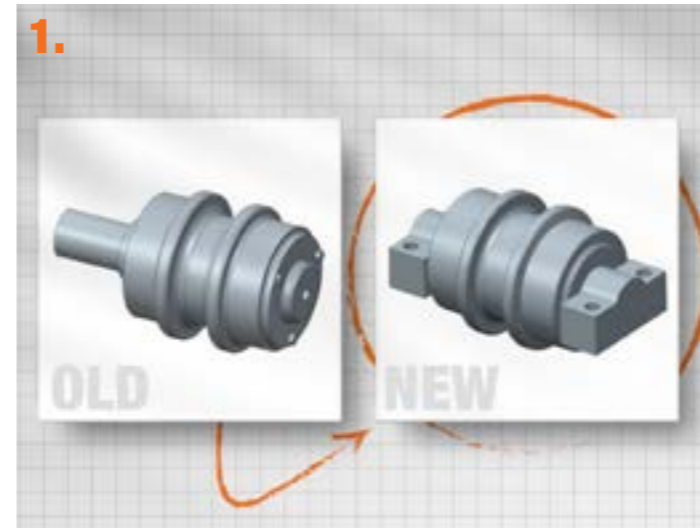
- Front and rear supports are cast, reducing welds and increasing torsional resistance
- Central ram pivot is forged to reduce stress
- EH hydraulic system reduces hoses and potential leak paths improving long-term performance

2. EXTRA PROTECTION

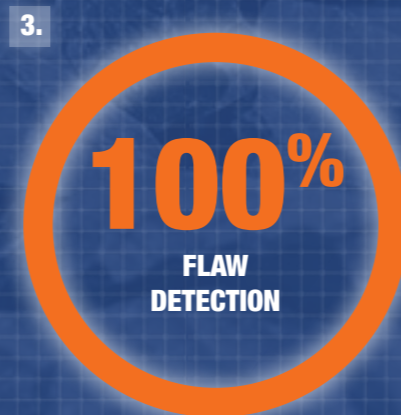
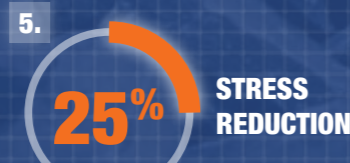
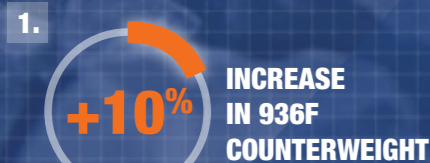
Deeper side beams provide higher impact resistance and make it quicker and easier to add additional impact plates if required.

4. INCREASED STABILITY

- 930F counterweight increased by 300kg to 5.8T
- 936F counterweight increased by 700kg to 7.7T



PERFORMANCE STATISTICS



TOUGHNESS IS WHAT WE DO...

With over 50,000 excavators already working in the world's toughest environments, you can trust our machines to keep working harder - for longer.





“ WHY CHOOSE BETWEEN POWER AND EFFICIENCY WHEN YOU CAN HAVE BOTH? ”



POWER AND EFFICIENCY
DESIGNED TO MOVE MORE, FOR LESS



DESIGNED TO MOVE MORE, FOR LESS...

There's no need to compromise digging performance to get the highest fuel efficiency because the all New 30 - 42T range gives you both. With greater torque and more power at lower engine speeds you get the power you want and the fuel efficiency you need.



POWER AND EFFICIENCY

1. MORE REAL POWER

With VGT technology, six-cylinder Cummins engines deliver 5% extra torque compared to high torque at low engine speeds. VGT enables the engine to maximize its power output whilst creating less noise and using less fuel.

2. SAVE EVERY DROP OF FUEL

Engine Auto Idle and Auto Shutdown make every single drop of fuel count. Reducing unproductive fuel saves you money and helps protect the environment.

3. EXCEED YOUR EXPECTATIONS

When it comes to efficiency, the 30 - 42T range is smarter than you'd think. Feed Forward control technology matches the engine's speed to the operator's command and predicted load to deliver even greater fuel economy.

5. MOVE MORE FOR LESS

We are always improving our performance, with fuel consumption reduced by 10% and efficiency increased by 5% compared to the E Series, we have delivered on that promise.

4. BOOSTING YOUR PERFORMANCE

- 20% Increased Slew Torque on 930F/933F and 23% Increase of 936F/939F/942F
- Increased Travel Motor Power: 930F/933F - 6% Increase 942F - 9% Increase

EXTRA

- 942F offers increased lift performance with 20mm larger diameter boom cylinders

1.



3.

FEED FORWARD

OPERATOR MOVES JOYSTICK



PREDICTED MACHINE LOAD

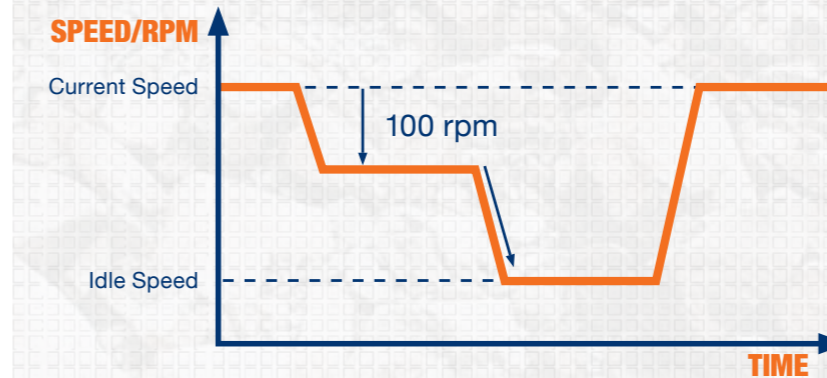
ENGINE FUELLING CORRECTION

ENGINE SPEED DROPS LESS



SHORTER SPEED RECOVERY

2.



4.



PERFORMANCE STATISTICS

1.

+5%

EXTRA TORQUE

5.

+10%

BETTER ON FUEL

5.

+20%

INCREASE ON SLEW TORQUE

WHY COMPROMISE?

The all New 30 - 42T range let's you do more, for less cost, and with less environmental impact, don't settle for anything less.



**“ TOUGH MACHINES CAN
BE INTELLIGENT TOO ”**



INTELLIGENCE AND CONTROL
DESIGNED TO WORK SMARTER



DESIGNED TO WORK SMARTER

Smart operators choose smart machines because they know their job is tough enough. When it comes to intelligence and control the all New 30 - 42T range may surprise you as it's packed with smart features to make life easier.



INTELLIGENCE AND CONTROL

1. CHOOSE YOUR MODE

With a choice of 3 Integrated Work Modes each designed to match the engine speed, pump flow and system pressure to your chosen application, it's easy to find the perfect balance of performance and economy.

3. USE OUR BRAINS

With a suite of Smart functions at your fingertips you can control your attachment properties from the comfort of your cab. It's easy:

- ▣ Adjustable flow control
- ▣ Adjustable pressure control
- ▣ 10 attachment settings

5. WORK SMARTER WITH BOOM FLOAT

Improves performance and prolongs tool life by preventing excessive pressure during braking applications.


Perfect for smooth levelling and deep excavation work, this smart function reduces fuel consumption by allowing the boom to fall under its own mass.


2. ELECTRO-HYDRAULIC CONTROL


The state-of-the-art full electro-hydraulic system from Kawasaki provides lightening fast signals between the joysticks, pumps and valve blocks to deliver pin point precision and maximize available engine power.

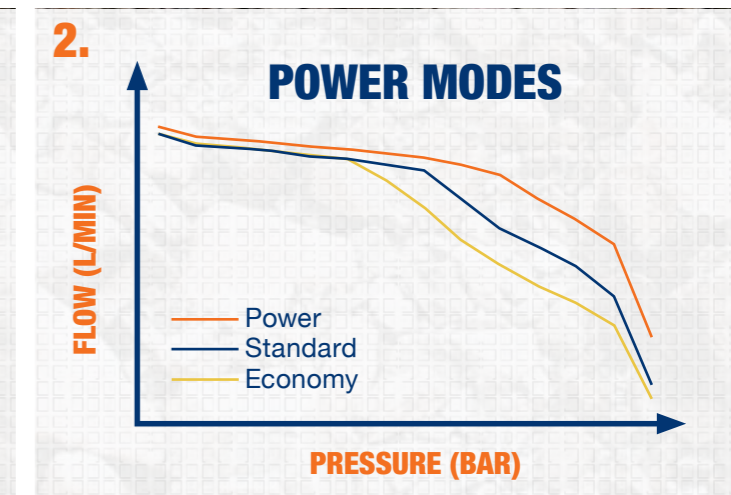
4. INCREASED HYDRAULIC PERFORMANCE

- ▣ 936F/939F/942F features a larger pump with 11% increased flow

1.  **ECONOMY (E) MODE**
FOR LIGHT WORK

 **STANDARD (S) MODE**
FOR STANDARD OPERATION

 **POWER (P) MODE**
FOR HEAVY DUTY



SMART IDEAS IN ACTION

The all New 30 - 42T range has the perfect balance of toughness and intelligence designed to keep you in control.

PERFORMANCE STATISTICS

4. **x10** ATTACHMENT SETTINGS

2. **+11%** INCREASE ON 936F / 939F / 942F

1. **x3** DEDICATED POWER MODES

3. **-10%** REDUCTION IN FUEL CONSUMPTION



“ TOUGH DAYS GO FASTER WHEN YOU’RE WORKING IN COMFORT ”

LIUGONG

COMFORT AND ERGONOMICS
DESIGNED AROUND THE OPERATOR



DESIGNED AROUND THE OPERATOR

Climb into the spacious cab and you'll know that it has been designed by a team that really knows what its like to be an operator. Talking, listening and observing operators, our design team spend almost as much time in the cab as they do with the CAD. The result? One of the most ergonomic and comfortable cabs you can get.



COMFORT AND ERGONOMICS

1. PERFECT CONTROL

- From the ergonomically positioned non-slip pedals to the multi-functional joysticks, the cab interior represents a masterclass in design.
- Every action and movement requires the minimum of effort from the operator.
- Boom float, travel speed and proportional auxiliary controls are customizable and finger tip controlled - you can even mute your music!

3. YOUR CHOICE OF SEAT

- Every operator is different, so we offer a range of seats and joystick configurations to suit everyone.
- Mechanical suspension standard seat
 - Comfort level, air suspension seat with adjustable lumbar support.
 - Luxury level, heated air suspension seat with adjustable lumbar and premium padding.

5. IT'S SO QUIET

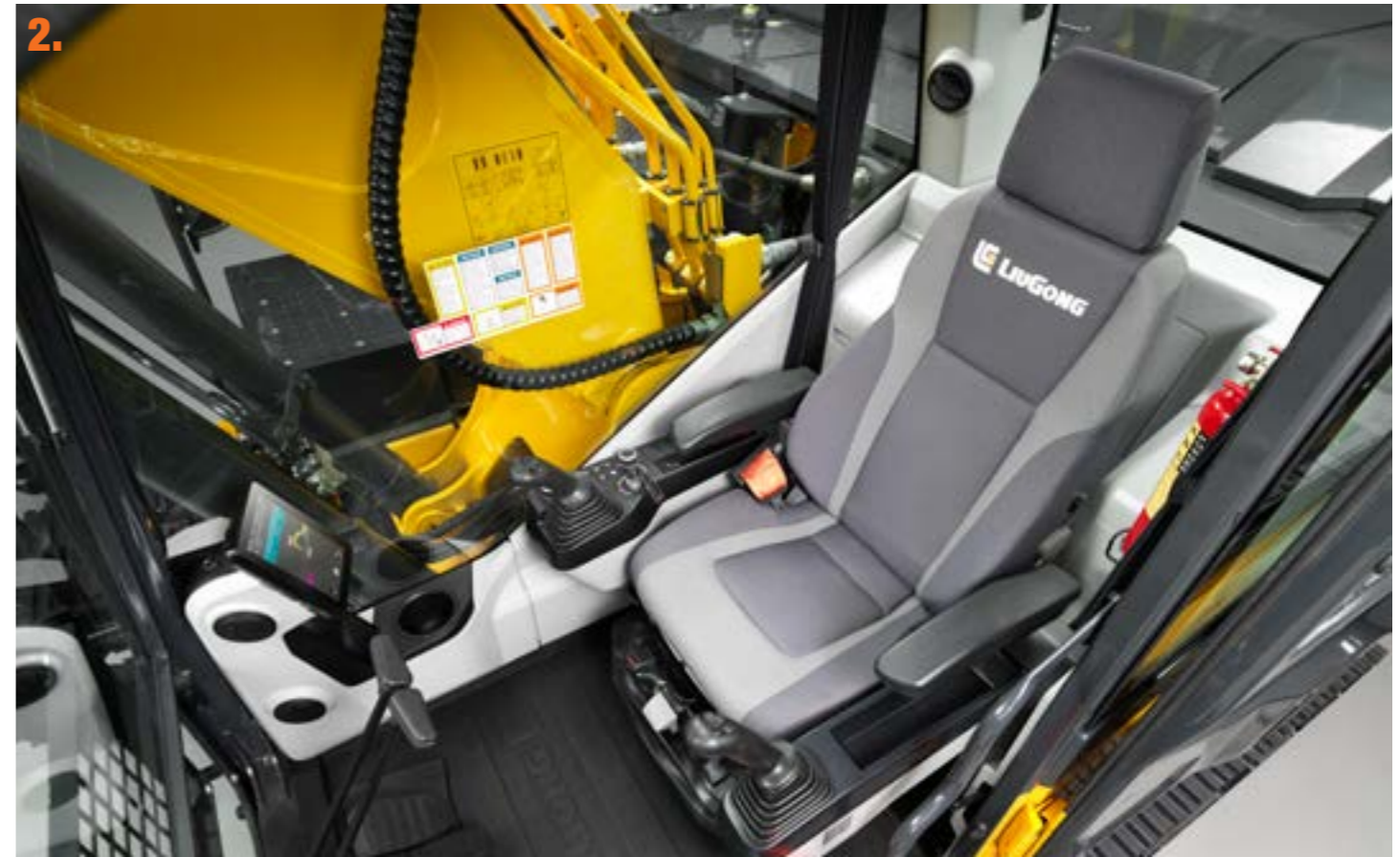
Our latest F Series cabin and sound insulation system dramatically reduces the noise in cab by as much as 3dB on the 930F/933F and 6dB on the 936F/939F/942F.

2. INTUITIVE INTERFACE

We've designed the operator interface to be even more intuitive and easy to use. The large 8-inch LCD colour screen can be controlled via touchscreen or by a fingertip navigational control dial conveniently sited in the armrest control panel.

4. MAKE IT YOUR PLACE

- We never forget that a machine is not just a tool, it's your place for many hours a day (and night). So, we've remembered all the little things that make it feel like home.
- Cool box for food & drinks
 - Large storage box and rack
 - Drinks holder
 - Phone holder with 12V charging, USB and AUX ports



PERFECTLY MATCHED TO YOU

The all New 30 - 42T range gives you the operating environment you would design for yourself.

TICKS ALL THE RIGHT BOXES

- ✓ INTUITIVE LCD OPERATOR CONSOLE
- ✓ FULLY PRESSURIZED (100PA)
- ✓ ENHANCED VISIBILITY
- ✓ CUSTOMIZABLE OPERATING HANDLE
- ✓ ERGONOMIC LAYOUT
- ✓ ADVANCE AIR-CON AND TEMPERATURE CONTROL
- ✓ HIGH COMFORT, FULLY ADJUSTABLE SEAT
- ✓ LOW NOISE AND LOW VIBRATION



“ WE CONSTANTLY ASK... HOW CAN WE MAKE OUR MACHINES EVEN SAFER ”



SAFETY AND VISIBILITY
DESIGNED TO PROTECT



SAFER ALL-ROUND ACCESS

Being protected in the cab is important, but accident research shows us that most accidents occur outside of the machine. We've taken the challenge to make our machines even safer to be around.



SAFETY AND VISIBILITY

1. MORE PROTECTION WHERE YOU NEED IT

The driver protection system delivers even greater protection to the front and top of the cab and protects the operator from falling rocks and debris. The front screen has a hinge design making cleaning and maintenance easier.

2. WATCH YOUR STEP

- The new 0.5m wide stepped boarding channel with non-slip treadplates makes getting on and off the machine safer
- The engine compartment features a gripped access platform.
- Optional guard rails or integral fences on the left and right sides of the upper platform increase safety.

3. EMERGENCY STOP

The ground level emergency stop switch is fitted as standard.

4. BE SAFE. BE SEEN

LED work light for better night visibility is fitted as standard.

5. SEE THE WHOLE SITE

Our cab design provides the operator with the very best view of the site, from every angle. Smart design ideas such as integrating the steps into the line of the cabin, improve visibility on the right hand side giving a 180 degree view.

6. SAFER MAINTENANCE ACCESS

No need to climb on the machine, all the daily maintenance points, including the oil level check point are easily accessible from the ground.

7. NO BLIND SPOTS

With 360 degree camera as standard in Europe, you can get an uninterrupted panoramic view around the machine at all angles from the large LCD screen.



BETTER BY DESIGN

LiuGong's Red Dot Award winning design* team is rapidly building a reputation for un-matched visibility. When you can see more you can do more, whilst protecting yourself and people around the machine.

With the All New 30-42T we've pushed the barriers and taken visibility another step forward.

*4180D Motorgrader



reddot design award

YOUR SAFETY - OUR PRIORITY

The all New 30 - 42T range has the perfect balance toughness and intelligence designed to keep you in control.



“ CAN DAILY MAINTENANCE REALLY BE AS SIMPLE AS THIS? ”



UPTIME AND MAINTENANCE
DESIGNED TO BE EASY TO SERVICE AND MAINTAIN



EASY TO OWN AND EASY TO MAINTAIN

We understand that when your machine's not working, it's not earning. To maximize your productive hours, we've made the All New 30-42T even easier to maintain, helping you make every productive second count.



MAINTENANCE AND UPTIME

1. FULLY SYNCHRONIZED MAINTENANCE

Maintenance should be simple so to save you time, all engine oil filter replacement cycles have been synchronized.

2. SPACE FOR YOUR KIT

We've increased the storage space behind the cab and added a segregating tray to create a useful space for your maintenance kit such as grease guns and lifting equipment.

3. NO RISK - LOW LEVEL ACCESS

Convenience and safety should never be compromised.

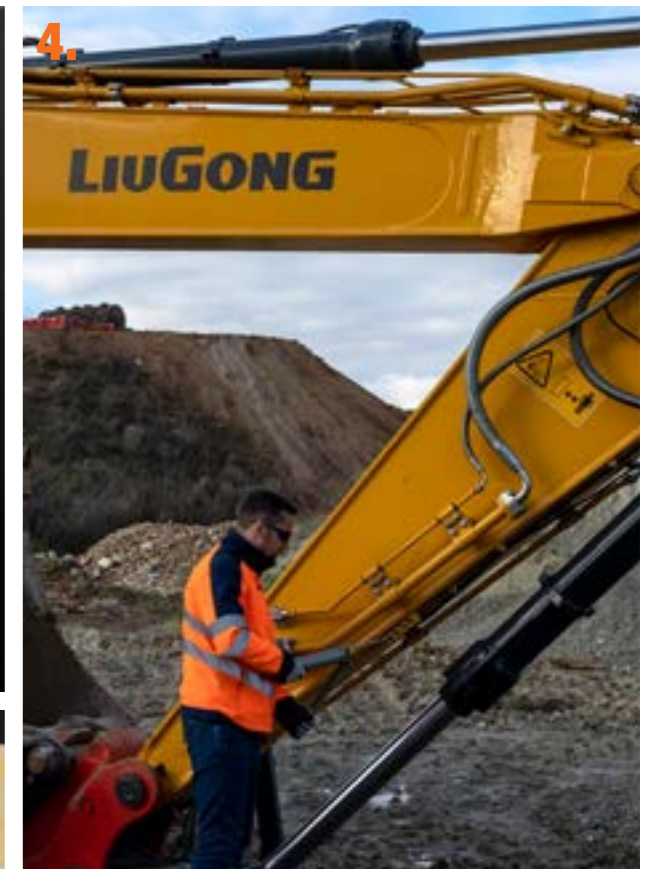
- The easy to access optional re-fuelling pump is safely stowed behind the bay door.
- All filters are located close to the bay doors for safe access and speedy maintenance.
- To aid access to the upper structure, a second access ladder behind the cabin offers additional convenience to the operator.

4. MAKING IT FASTER EVERYDAY

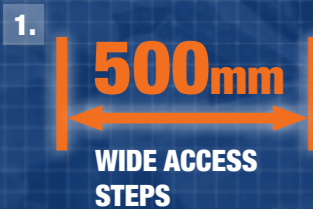
By grouping the greasing points together on the boom base, top of the dipper and slew bearing we make daily maintenance faster and easier. Optional automatic lubrication pipeline gives you easy access to all the lubrication points in one place, saving you even more time on daily maintenance.

5. 5000 HOUR OIL LIFE

New long life hydraulic oil reduces total cost of ownership and saves service maintenance time.



PERFORMANCE STATISTICS



SPECIFICATIONS



OPERATING WEIGHT

930F	31,600 kg (70,222 lbs)
933F	34,300 kg (76,222 lbs)
936F	38,800 kg (86,222 lbs)
939F	39,800 kg (88,444 lbs)
942F	42,800 kg (95,111 lbs)

Operating weight includes coolant, lubricants, full fuel tank, cab, standard shoes, boom, arm, bucket and operator 75 kg (165 lbs).

Bucket Capacity	930F	1.4 m ³ (1.8 yd ³)
	933F	1.4 m ³ (1.8 yd ³)
	936F	1.8 m ³ (2.35 yd ³)
	939F	2.0 m ³ (2.62 yd ³)
	942F	2.1 m ³ (2.75 yd ³)

HYDRAULIC SYSTEM

Main pump

Type	Load-sensing variable pump
------	----------------------------

Maximum flow	930F/933F	2 x 266 L/min (2 x 70.3 gal/min)
	936F/939F/942F	2 x 333 L/min (2 x 88 gal/min)

Relief valve setting

Implement	34.3 MPa (4,975 psi)
Travel circuit	34.3 MPa (4,975 psi)
Slew circuit	32.4 MPa (4,699 psi)

Pilot circuit	3.5-3.9 MPa (508-566 psi)
---------------	---------------------------

Hydraulic cylinders

Boom Cylinder – Bore x Stroke	930F/933F	Φ140 x 1,342 mm (Φ5.5" x 4'4")
	936F/939F/942F	Φ140 x 1,505 mm (Φ5.5" x 4'11")

Arm Cylinder – Bore x Stroke	930F/933F	Φ150 x 1,755 mm (Φ5.9" x 5'9")
	936F/939F/942F	Φ175 x 1,785 mm (Φ6.9" x 5'10")

Bucket Cylinder – Bore x Stroke	930F/933F	Φ140 x 1,135 mm (Φ5.5" x 3'8")
	936F/939F/942F	Φ160 x 1,250 mm (Φ6.3" x 4'1")

ELECTRIC SYSTEM

System Voltage	24 V
----------------	------

Batteries	2 x 12 V
-----------	----------

Alternator	24 V - 70 A
------------	-------------

Start motor	930F/933F	24 V-7.8 kW (24 V-10.5 hp)
	936F/939F/942F	24 V-8 kW (24 V- 0.7 hp)

ENGINE

Description

930F/933F Cummins B6.7

936F/939F/942F Cummins L9

Emission rating EU Stage V

Engine manufacturer	Cummins
---------------------	---------

Engine model	930F/933F	B6.7
	936F/939F/942F	L9

Aspiration Turbo

Charged air cooling /

Cooling fan drive Direct

Displacement	930F/933F	6.7 L (1.77 in ³)
	936F/939F/942F	8.9 L (2.35 in ³)

Rated speed	930F/933F	2,000 rpm
	936F/939F/942F	2,100 rpm

Engine output - net (SAE J1349 / ISO 9249)	930F/933F	161 kW (219 hp)
	936F/939F/942F	219 kW (298 hp)

Engine output - rated (SAE J1995 / ISO 14396)	930F/933F	173 kW (235 hp)
	936F/939F/942F	231 kW (314 hp)

Maximum torque	930F/933F	949 N-m (700 lbf) @ 1,500 rpm
	936F/939F/942F	1,526 N-m (1,126 lbf) @ 1,400 rpm

Bore x Stroke	930F/933F	107 x 124 mm (4.2" x 4.9")
	936F/939F/942F	114 x 145 mm (4.4" x 5.7")

DRIVE AND BRAKES

Description

2-speed axial piston motors with oil disk brakes. Steering controlled by two hand levers with pedals.

Max. travel speed	930F/933F	High: 5.5 km/h (3.4 mph) Low: 3.0 km/h (1.9 mph)
	942F	High: 5.4 km/h (3.4 mph) Low: 2.9 km/h (1.8 mph)

Gradeability 35%/70%

Max. drawbar pull	930F/933F/936F/939F	320 kN (71,939 lbf)
	942F	350 kN (78,683 lbf)

SWING SYSTEM

Description

Planetary gear reduction driven by high torque axial piston motor, with oil disk brake. Swing parking brake resets within five seconds after swing pilot controls return to neutral.

Swing speed	930F/933F	10.3 rpm
	936F/939F	10 rpm
	942F	9.8 rpm

Swing torque	930F/933F	127,000 N-m (93,670 lbf-ft)
	936F/939F/942F	137,000 N-m (101,046 lbf-ft)

UNDERCARRIAGE

Track shoe each side	930F	51
	933F/936F/939F	49
	942F	50

Link pitch /

Shoe width, triple grouser 600 mm (1'12")

Bottom rollers each side 9

Top rollers each side 2

Chain track pitch	930F	203 mm (7.9")
	933F/936F/939F/942F	216 mm (8.5")

SERVICE CAPACITIES

Fuel tank	930F/933F	520 L (137.4 gal)
	936F/939F/942F	620 L (163.8 gal)

Engine oil	930F/933F	23 L (6.1 gal)
	936F/939F/942F	30 L (7.9 gal)

Final drive (each) 2 x 9.5 L (2 x 2.5 gal)

Swing drive 10.5 L (2.8 gal)

Cooling system	930F/933F	35 L (9.2 gal)
	936F/939F/942F	37 L (9.8 gal)

Hydraulic reservoir	930F/933F	195 L (51.5 gal)
	936F/939F/942F	240 L (63.4 gal)

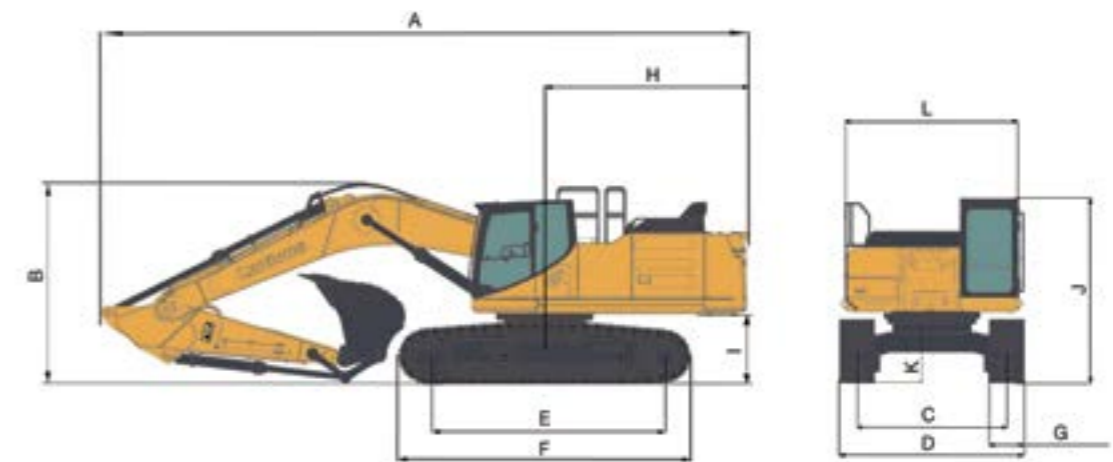
Hydraulic system total	930F/933F	360 L (95.1 gal)
	936F/939F/942F	450 L (118.8 gal)

DEF tank 65 L (17.17 gal)

SOUND PERFORMANCE

Interior Sound Power Level (ISO 6396)	930F/933F/936F/939F	69 dB(A)
	942F	69 dB(A)

Exterior Sound Power Level (ISO 6395)	930F/933F/936F/939F	105 dB(A)
	942F	105 dB(A)

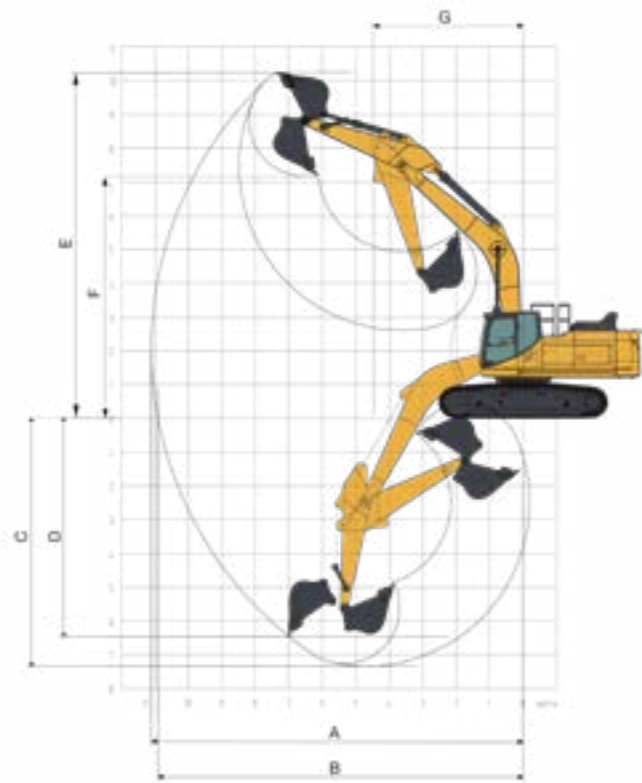


DIMENSIONS 930F/933F

Boom	6,200 mm (20'4")	
Arm Options	3,050 mm (10'0")	2,600 mm (8'6")
A Shipping Length	930F 10,653 mm (34'11") / 933F 10,650 mm (34'11")	930F 10,250 mm (33'7")
B Shipping Height – Top of Boom	3,525 mm (11'7")	
C Track Gauge	2,590 mm (8'6")	
D Undercarriage Width– 600mm shoes	3,190 mm (10'6")	
E Length to Center of Rollers	930F 4,010 mm (13'2") / 933F 4,140 mm (13'7")	
F Track Length	930F 4,935 mm (16'2") / 933F 5,075 mm (16'8")	
G Track Shoe Width	600 mm (24")	
H Tail Swing Radius	930F 3,233 mm (10'7") / 933F 3,280 mm (10'9")	
I Counterweight Ground Clearance	1,250 mm (4'1")	
J Overall Height of Cab	3,175 mm (10'5")	
Overall Height of Cab-with OPG	3,310 mm (10'10")	
Overall Height of Cab- with dome lamp	3,310 mm (10'10")	
K Min. Ground Clearance	535 mm (1'9")	
L Overall Width of Upper Structure	2,995 mm (9'9") / 3,059 mm (10'0")	

DIMENSIONS 936F 939F 942F

Boom	6,400 mm (21')		
Arm Options	3,200 mm (10'6") / 2,900 mm (9'6") / 2,600 mm (8'6")	3,200 mm (10'6") / 2,900 mm (9'6") / 2,600 mm (8'6")	
A Shipping Length	11,300 mm (37'1")		11,597 mm (37'1")
B Shipping Height – Top of Boom	3,800 mm (12'6")		
C Track Gauge	2,590 mm (8'6")		
D Undercarriage Width– 600mm shoes	3,190 mm (10'6")		
E Length to Center of Rollers	4,140 mm (13'7")		4,250 mm (13'11")
F Track Length	5,075 mm (16'8")		5,215 mm (17'1")
G Track Shoe Width	600 mm (24")		
H Tail Swing Radius	3,593 mm (11'9")		3,766 mm (12'4")
I Counterweight Ground Clearance	1,250 mm (4'1")		
J Overall Height of Cab	3,175 mm (10'5")		
Overall Height of Cab-with OPG	3,310 mm (10'10")		
Overall Height of Cab- with dome lamp	3,310 mm (10'10")		
K Min. Ground Clearance	545 mm (1'9")		
L Overall Width of Upper Structure	2,995 mm (9'9") / 3,059 mm (10'0")		2,995 mm (9'9") / 3,059 mm (10'0")



WORKING RANGE	930F/933F		936F/939F/942F		
Boom Length	6,200 mm (20'4")		6,400 mm (21')		
Arm Length	3,050 mm (10'0")	2,600 mm (8'6")	3,200 mm (10'6")	2,900 mm (9'6")	2,600 mm (8'6")
A. Max. Digging Reach	10,653 mm (34'11")	10,250 mm (33'8")	11,100 mm (36'5")	10,728 mm (35'2")	10,560 mm (34'8")
B. Max. Digging Reach on Ground	10,453 mm (34'4")	10,032 mm (32'11")	10,900 mm (35'9")	10,527 mm (34'6")	10,350 mm (33'11")
C. Max. Digging Depth	7,300 mm (23'11")	6,825 mm (22'5")	7,340 mm (24'1")	6,890 mm (22'7")	6,730 mm (22'1")
D. Max. Vertical Wall Digging Depth	6,216 mm (20'5")	5,450 mm (17'11")	6,460 mm (21'2")	5,085 mm (16'8")	4,430 mm (14'6")
E. Max. Cutting Height	10,300 mm (33'10")	10,007 mm (32'10")	10,240 mm (33'7")	9,818 mm (32'3")	9,830 mm (32'3")
F. Max. Dumping Height	7,265 mm (23'10")	7,086 mm (23'3")	7,160 mm (23'6")	6,655 mm (21'10")	6,900 mm (22'8")
G. Min. Front swing radius	4,040 mm (13'3")		4,465 mm (14'8")		
Max. Digging Depth, 2.44 m (8') Level	/		/		
Lift above Ground	/		/		
Depth below Ground	/		/		
Bucket Digging Force (ISO)	203 kN (45,636 lbf)		290 kN (65,195 lbf)		
Arm Digging Force (ISO)	149 kN (33,497 lbf)	165 kN (37,093 lbf)	196 kN (44,063 lbf)	227 kN (51,032 lbf)	243 kN (54,629 lbf)
Bucket Capacity	1.4 m ³ (1.8 yd ³)		936F 1.8 m ³ (2.4 yd ³) 939F 2.0 m ³ (2.6 yd ³) 942F 2.1 m ³ (2.7 yd ³)		
Bucket Tip Radius	1,671 mm (5'6")		936F/939F 1,785 mm (5'10") 942F 1,839 mm (6'0")		

MACHINE WEIGHTS AND GROUND PRESSURE 930F			
Shoe width	Operating weight	Ground pressure	Overall width
	6.2 m (20'4") boom, 3.05 m (10'0") arm, 1.4 m ³ (1.8 yd ³) bucket, 5,200 kg (11,464 lbs) counterweight		
600 mm (24")	31,600 kg (70,222 lbs)	59.4 kPa (8.6 psi)	3,190 mm (10'5")
700 mm (28")	32,000 kg (70,548 lbs)	52 kPa (7.5 psi)	3,190 mm (10'5")
800 mm (32")	32,400 kg (71,430 lbs)	46 kPa (6.7 psi)	3,190 mm (10'5")
900 mm (35")	32,800 kg (72,312 lbs)	41 kPa (5.9 psi)	3,190 mm (10'5")

MACHINE WEIGHTS AND GROUND PRESSURE 933F			
Shoe width	Operating weight	Ground pressure	Overall width
	6.2 m (20'4") boom, 3.05 m (10'0") arm, 1.4 m ³ (1.8 yd ³) bucket, 6,700 kg (14,771 lbs) counterweight		
600 mm (24")	34,300 kg (75,619 lbs)	62.7 kPa (9.1 psi)	3,190 mm (10'5")
700 mm (28")	34,700 kg (76,500 lbs)	54 kPa (7.8 psi)	3,190 mm (10'5")
800 mm (32")	35,100 kg (77,382 lbs)	48 kPa (7.0 psi)	3,190 mm (10'5")
900 mm (35")	35,500 kg (78,264 lbs)	43 kPa (6.2 psi)	3,190 mm (10'5")

MACHINE WEIGHTS AND GROUND PRESSURE 936F			
Shoe width	Operating weight	Ground pressure	Overall width
	6.4 m (21') boom, 3.2 m (10'6") arm, 1.8 m ³ (2.35 yd ³) bucket, 7,700 kg (16,976 lbs) counterweight		
600 mm (24")	38,800 kg (85,539 lbs)	69.7 kPa (10.1 psi)	3,190 mm (10'5")
700 mm (28")	39,200 kg (86,421 lbs)	60.4 kPa (8.8 psi)	3,190 mm (10'5")
800 mm (32")	39,600 kg (87,303 lbs)	53.4 kPa (7.7 psi)	3,190 mm (10'5")
900 mm (35")	40,000 kg (88,184 lbs)	47.9 kPa (6.9 psi)	3,190 mm (10'5")

MACHINE WEIGHTS AND GROUND PRESSURE 939F			
Shoe width	Operating weight	Ground pressure	Overall width
	6.4 m (21') boom, 3.2 m (10'6") arm, 1.8 m ³ (2.35 yd ³) bucket, 8,500 kg (18,739 lbs) counterweight		
600 mm (24")	39,800 kg (87,744 lbs)	71.5 kPa (10.4 psi)	3,190 mm (10'5")
700 mm (28")	40,200 kg (88,626 lbs)	61.9 kPa (9.0 psi)	3,190 mm (10'5")
800 mm (32")	40,600 kg (89,508 lbs)	54.7 kPa (7.9 psi)	3,190 mm (10'5")
900 mm (35")	41,000 kg (90,390 lbs)	49.1 kPa (7.1 psi)	3,190 mm (10'5")

MACHINE WEIGHTS AND GROUND PRESSURE 942F			
Shoe width	Operating weight	Ground pressure	Overall width
	6.4 m (21') boom, 3.2 m (10'6") arm, 2.1 m ³ (2.75 yd ³) bucket, 9,000 kg (19,842 lbs) counterweight		
600 mm (24")	42,800 kg (94,358 lbs)	76.3 kPa (11.1 psi)	3,190 mm (10'5")
700 mm (28")	43,200 kg (95,240 lbs)	66.0 kPa (9.6 psi)	3,190 mm (10'5")
800 mm (32")	43,600 kg (96,122 lbs)	58.3 kPa (8.5 psi)	3,190 mm (10'5")
900 mm (35")	44,000 kg (97,003 lbs)	52.3 kPa (7.6 psi)	3,190 mm (10'5")

ARM DIMENSIONS					
	930F/933F			936F/939F/942F	
Arm	3,050 mm (10'0")	2,600 mm (8'6")	3,200 mm (10'6")	2,900 mm (9'6")	2,600 mm (8'6")
Length	4,224 mm (13'10")	3,800 mm (12'6")	4,384 mm (14'5")	4,166 mm (13'8")	3,818 mm (12'6")
Height	1,016 mm (3'4")	4,045 mm (13'3")	1,095 mm (3'7")	1,107 mm (3'8")	1,120 mm (3'8")
Width	532 mm (1'9")	532 mm (1'9")	655 mm (2'2")	655 mm (2'2")	655 mm (2'2")
Weight	930F 1,720 kg (3,792 lbs) 933F 1,834 kg (4,043 lbs)	1,752 kg (3,862 lbs)	2,189.5 kg (4,827 lbs)	2,157 kg (4,755 lbs)	2,046.5 kg (4,512 lbs)

Cylinder, linkage and pin included.

BOOM DIMENSIONS		
	930F/933F	936F/939F/942F
Boom	6,200 mm (20'4")	6,400 mm (21')
Length	6,430 mm (21'1")	6,640 mm (21'9")
Height	1,557 mm (5'1")	1,684 mm (5'6")
Width	942 mm (3'1")	973 mm (3'2")
Weight	930F 2,839 kg (6,259 lbs) / 933F 3,034 kg (6,689 lbs)	3,535.5 kg (7,794 lbs)

Cylinder, piping and pin included. Boom cylinder pin excluded.

BUCKET SELECTION GUIDE 930F/933F						
6.2 m (20'4") Boom						
Bucket type	Capacity	Cutting width	Weight	Teeth pcs	3.05 m (10'0") Arm	2.6 m (8'6") Arm
Earth type	/	/	/	/	/	/
General type	1.4 m ³ (1.83 yd ³)	1,445 mm (4'9")	1,387 kg (3,058 lbs)	5	C&D	/
General type	1.6 m ³ (2.09 yd ³)	1,560 mm (5'1")	1,487.5 kg (3,279 lbs)	5	/	C&D
Rock type	/	/	/	/	/	/

The recommendations are given as a guide only, based on typical operation conditions. Bucket capacity based on ISO 7451, heaped material with a 1:1 angle of repose.

Maximum material density:
 A. 1,200-1,300 kg/m³ (2,023-2,191 lb/yd³): Coal, Caliche, Shale
 B. 1,400-1,600 kg/m³ (2,360-2,697 lb/yd³): Wet earth and clay, limestone, sandstone
 C. 1,700-1,800 kg/m³ (2,865-3,034 lb/yd³): Granite, wet sand, well blasted rock
 D. 1,900 kg/m³ (3,203 lb/yd³): Wet mud, Iron ore
 NA. Not applicable

BUCKET SELECTION GUIDE 936F							
6.2 m (20'4") Boom							
Bucket type	Capacity	Cutting width	Weight	Teeth pcs	3.2 m (10'5") Arm	2.9 m (9'6") Arm	2.6 m (8'6") Arm
Earth type	/	/	/	/	/	/	/
General type	1.8 m ³ (2.35 yd ³)	1,540 mm (5'0")	1,667 kg (3,675 lbs)	5	B	C	D
Rock type	/	/	/	/	/	/	/

The recommendations are given as a guide only, based on typical operation conditions. Bucket capacity based on ISO 7451, heaped material with a 1:1 angle of repose.

Maximum material density:
 A. 1,200-1,300 kg/m³ (2,023-2,191 lb/yd³): Coal, Caliche, Shale
 B. 1,400-1,600 kg/m³ (2,360-2,697 lb/yd³): Wet earth and clay, limestone, sandstone
 C. 1,700-1,800 kg/m³ (2,865-3,034 lb/yd³): Granite, wet sand, well blasted rock
 D. 1,900 kg/m³ (3,203 lb/yd³): Wet mud, Iron ore
 NA. Not applicable

BUCKET SELECTION GUIDE 939F/942F							
6.2 m (20'4") Boom							
Bucket type	Capacity	Cutting width	Weight	Teeth pcs	3.2 m (10'5") Arm	2.9 m (9'6") Arm	2.6 m (8'6") Arm
Earth type	/	/	/	/	/	/	/
General type	939F 2.0 m ³ (2.62 yd ³) 942F 2.1 m ³ (2.75 yd ³)	1,605 mm (5'3")	1,736 kg (3,827 lbs)	5	B	C	D
Rock type	/	/	/	/	/	/	/

The recommendations are given as a guide only, based on typical operation conditions. Bucket capacity based on ISO 7451, heaped material with a 1:1 angle of repose.

Maximum material density:
 A. 1,200-1,300 kg/m³ (2,023-2,191 lb/yd³): Coal, Caliche, Shale
 B. 1,400-1,600 kg/m³ (2,360-2,697 lb/yd³): Wet earth and clay, limestone, sandstone
 C. 1,700-1,800 kg/m³ (2,865-3,034 lb/yd³): Granite, wet sand, well blasted rock
 D. 1,900 kg/m³ (3,203 lb/yd³): Wet mud, Iron ore
 NA. Not applicable

Lifting capacity at the arm end without bucket.
 For lifting capacity including bucket, weight of the bucket or the bucket with quick coupler must be deducted from the lifting capacities.

Lifting capacities are based on the machine standing on a firm, uniform supporting surface.



Rating over-front (Cf)



Rating over-side (Cs)

- Do not attempt to lift or hold any load that is greater than these rated values at their specified load radius and height. Weight of all accessories must be deducted from the above lifting capacities.
- The rated loads are in compliance with ISO 10567 Hydraulic Excavator Lift Capacity Rating Standard. They do not exceed 87% of hydraulic lifting capacity or 75% tipping load.
- Ratings at bucket lift hook.

- Lifting capacities are based on machine standing on level, firm and uniform ground.
- *Indicates the load is limited by hydraulic capacity rather than tipping capacity.
- Operator should be fully acquainted with the Operator's and Maintenance Instructions before operating this machine and rules for the safe operation of equipment should be adhered to at all times.

LIFTING CAPACITY

930F with 600 mm (24") Shoes, 6,200 mm (20'4") Boom, 3,050 mm (10'0") Arm

Conditions

A: Load radius
 B: Load point height
 C: Lifting capacity rating
 Cf: Rating loads over front
 Cs: Rating loads over side or 360°

Boom length: 6,200 mm (20'4")
 Arm length: 3,050 mm (10'0")
 Shoes: 600 mm (24")
 Bucket: None
 Unit: kg



B (m)	A (Unit: m)												MAX REACH A (m)
	1.5		3		4.5		6		7.5				
	Cf	Cs	Cf	Cs	Cf	Cs	Cf	Cs	Cf	Cs	Cf	Cs	
6.0 (20 ft)	kg												8.1
	lb												27.0
4.5 (15 ft)	kg												8.7
	lb												29.0
3.0 (10 ft)	kg												9.0
	lb												30.0
1.5 (5 ft)	kg												9.0
	lb												30.0
GROUND LEVEL	kg												8.8
	lb												29.0
-1.5 (-5 ft)	kg												8.3
	lb												27.0
-3.0 (-10 ft)	kg												7.5
	lb												25.0
-4.5 (-15 ft)	kg												6.2
	lb												20.0

LIFTING CAPACITY

930F with 700 mm (28") Shoes, 6,200 mm (20'4") Boom, 3,050 mm (10'0") Arm

Conditions

A: Load radius
B: Load point height
C: Lifting capacity rating
Cf: Rating loads over front
Cs: Rating loads over side or 360°

Boom length: 6,200 mm (20'4")
Arm length: 3,050 mm (10'0")
Shoes: 700 mm (28")
Bucket: None
Unit: kg



B (m)	A (Unit: m)												A (m)	
	1.5		3		4.5		6		7.5		MAX REACH			
	Cf	Cs	Cf	Cs	Cf	Cs	Cf	Cs	Cf	Cs	Cf	Cs		
6.0 (20 ft)	kg							*6,977	*6,977	*6,852	*6,852	*6,154	*6,154	8.1
	lb							*15,382	*15,382	*15,107	*15,107	*13,568	*13,568	27.0
4.5 (15 ft)	kg					*9,600	*9,600	*8,032	*8,032	*7,291	6,905	*6,045	5,563	8.7
	lb					*21,164	*21,164	*17,708	*17,708	*16,075	15,223	*13,326	12,264	29.0
3.0 (10 ft)	kg					*12,491	*12,491	*9,402	9,083	*7,980	6,720	*6,197	5,225	9.0
	lb					*27,539	*27,539	*20,727	20,026	*17,594	14,815	*13,662	11,520	30.0
1.5 (5 ft)	kg					*14,790	12,825	*10,677	8,745	*8,682	6,542	*6,981	5,153	9.0
	lb					*32,607	28,275	*23,540	19,280	*19,141	14,422	*15,392	11,361	30.0
GROUND LEVEL	kg					*15,796	12,549	*11,514	8,532	*9,186	6,417	*7,505	5,255	8.8
	lb					*34,825	27,666	*25,383	18,811	*20,251	14,147	*16,547	11,585	29.0
-1.5 (-5 ft)	kg	*8,654	*8,654	*12,956	*12,956	*15,766	12,513	*11,748	8,458	*9,291	6,376	*8,257	5,645	8.3
	lb	*19,079	*19,079	*28,563	*28,563	*34,757	27,587	*25,899	18,647	*20,482	14,057	*18,203	12,445	27.0
-3.0 (-10 ft)	kg	*15,061	*15,061	*20,740	*20,740	*14,851	12,633	*11,236	8,515			*8,582	6,463	7.5
	lb	*33,203	*33,203	*45,724	*45,724	*32,741	27,851	*24,772	18,773			*18,921	14,248	25.0
-4.5 (-15 ft)	kg			*17,371	*17,371	*12,713	*12,713	*9,348	8,756			*8,879	8,412	6.2
	lb			*38,297	*38,297	*28,027	*28,027	*20,610	19,303			*19,575	18,544	20.0

LIFTING CAPACITY

930F with 600 mm (24") Shoes, 6,200 mm (20'4") Boom, 2,600 mm (8'6") Arm

Conditions

A: Load radius
B: Load point height
C: Lifting capacity rating
Cf: Rating loads over front
Cs: Rating loads over side or 360°

Boom length: 6,200 mm (20'4")
Arm length: 2,600 mm (8'6")
Shoes: 600 mm (24")
Bucket: None
Unit: kg



B (m)	A (Unit: m)												A (m)	
	3		4.5		6		7.5		MAX REACH					
	Cf	Cs	Cf	Cs	Cf	Cs	Cf	Cs	Cf	Cs				
6.0 (20 ft)	kg					*7,558	*7,558	*7,388	6,842	*7,407	6,702			7.6
	lb					*16,661	*16,661	*16,289	15,084	*16,330	14,775			25.0
4.5 (15 ft)	kg					*10,492	*10,492	*8,557	*8,557	*7,700	6,737	*7,551	5,920	8.2
	lb					*23,131	*23,131	*18,864	*18,864	*16,976	14,852	*16,646	13,052	27.0
3.0 (10 ft)	kg					*13,310	12,974	*9,844	8,829	*8,307	6,562	*7,277	5,446	8.6
	lb					*29,343	28,604	*21,703	19,465	*18,314	14,467	*16,044	12,007	28.0
1.5 (5 ft)	kg					*15,261	12,404	*10,985	8,511	*8,916	6,398	*8,031	5,369	8.6
	lb					*33,645	27,345	*24,218	18,763	*19,657	14,106	*17,706	11,836	28.0
GROUND LEVEL	kg					*15,836	12,229	*11,644	8,333	*9,299	6,296	*8,319	5,485	8.4
	lb					*34,912	26,959	*25,671	18,371	*20,501	13,881	*18,341	12,093	28.0
-1.5 (-5 ft)	kg	*13,578	*13,578	*15,485	12,261	*11,677	8,299	*9,212	6,292	*8,777	6,012			7.8
	lb	*29,934	*29,934	*34,139	27,031	*25,743	18,297	*20,308	13,872	*19,350	13,254			26.0
-3.0 (-10 ft)	kg	*19,284	*19,284	*14,277	12,439	*10,883	8,410			*9,182	7,088			6.9
	lb	*42,515	*42,515	*31,475	27,424	*23,992	18,540			*20,243	15,626			23.0
-4.5 (-15 ft)	kg	*15,525	*15,525	*11,627	*11,627					*9,318	*9,318			5.5
	lb	*34,226	*34,226	*25,634	*25,634					*20,543	*20,543			18.0

LIFTING CAPACITY

930F with 700 (28") mm Shoes, 6,200 mm (20'4") Boom, 2,600 mm (8'6") Arm

Conditions

A: Load radius
B: Load point height
C: Lifting capacity rating
Cf: Rating loads over front
Cs: Rating loads over side or 360°

Boom length: 6,200 mm (20'4")
Arm length: 2,600 mm (8'6")
Shoes: 700 mm (28")
Bucket: None
Unit: kg



B (m)	A (Unit: m)												A (m)			
	3		4.5		6		7.5		MAX REACH							
	Cf	Cs	Cf	Cs	Cf	Cs	Cf	Cs	Cf	Cs						
6.0 (20 ft)	kg							*7,558	*7,558	*7,388	6,960	*7,407	6,818	7.6		
	lb							*16,661	*16,661	*16,289	15,344	*16,330	15,032	25.0		
4.5 (15 ft)	kg							*10,492	*10,492	*8,557	*8,557	*7,700	6,855	*7,551	6,027	8.2
	lb							*23,131	*23,131	*18,864	*18,864	*16,976	15,113	*16,646	13,286	27.0
3.0 (10 ft)	kg							*13,310	13,203	*9,844	8,985	*8,307	6,680	*7,277	5,547	8.6
	lb							*29,343	29,108	*21,703	19,809	*18,314	14,728	*16,044	12,228	28.0
1.5 (5 ft)	kg							*15,261	12,633	*10,985	8,667	*8,916	6,516	*8,031	5,469	8.6
	lb							*33,645	27,850	*24,218	19,107	*19,657	14,366	*17,706	12,057	28.0
GROUND LEVEL	kg							*15,836	12,457	*11,644	8,489	*9,299	6,414	*8,319	5,589	8.4
	lb							*34,912	27,464	*25,671	18,714	*20,501	14,141	*18,341	12,321	28.0
-1.5 (-5 ft)	kg	*13,578	*13,578	*15,485	12,490	*11,677	8,455	*9,212	6,410	*8,777	6,125			7.8		
	lb	*29,934	*29,934	*34,139	27,535	*25,743	18,640	*20,308	14,132	*19,350	13,503			26.0		
-3.0 (-10 ft)	kg	*19,284	*19,284	*14,277	12,668	*10,883	8,566			*9,182	7,219			6.9		
	lb	*42,515	*42,515	*31,475	27,929	*23,992	18,884			*20,243	15,914			23.0		
-4.5 (-15 ft)	kg	*15,525	*15,525	*11,627	*11,627					*9,318	*9,318			5.5		
	lb	*34,226	*34,226	*25,634	*25,634					*20,543	*20,543			18.0		

LIFTING CAPACITY

933F with 600 mm (24") Shoes, 6,200 mm (20'4") Boom, 3,050 mm (10'0") Arm

Conditions

A: Load radius
B: Load point height
C: Lifting capacity rating
Cf: Rating loads over front
Cs: Rating loads over side or 360°

Boom length: 6,200 mm (20'4")
Arm length: 3,050 mm (10'0")
Shoes: 600 mm (24")
Bucket: None
Unit: kg



B (m)	A (Unit: m)												A (m)					
	1.5		3		4.5		6		7.5		MAX REACH							
	Cf	Cs	Cf	Cs	Cf	Cs	Cf	Cs	Cf	Cs	Cf	Cs						
6.0 (20 ft)	kg									*6,977	*6,977	*6,852	*6,852	*6,154	*6,154	8.1		
	lb									*15,382	*15,382	*15,107	*15,107	*13,568	*13,568	27.0		
4.5 (15 ft)	kg									*9,600	*9,600	*8,032	*8,032	*7,291	7,230	*6,045	5,835	8.7
	lb									*21,164	*21,164	*17,708	*17,708	*16,075	15,939	*13,326	12,864	29.0
3.0 (10 ft)	kg									*12,491	*12,491	*9,402	*9,402	*7,980	7,045	*6,197	5,487	9.0
	lb									*27,539	*27,539	*20,727	*20,727	*17,594	15,532	*13,662	12,097	30.0
1.5 (5 ft)	kg									*14,790	13,455	*10,677	9,174	*8,682	6,867	*6,981	5,415	9.0
	lb									*32,607	29,662	*23,540	20,225	*19,141	15,139	*15,392	11,938	30.0
GROUND LEVEL	kg									*15,796	13,179	*11,514	8,961	*9,186	6,742	*7,505	5,523	8.8
	lb									*34,825	29,054	*25,383	19,756	*20,251	14,864	*16,547	12,177	29.0
-1.5 (-5 ft)	kg	*8,654	*8,654	*12,956	*12,956	*15,766	13,143	*11,748	8,887	*9,291	6,701	*8,257	5,933					8.3
	lb	*19,079	*19,079	*28,563	*28,563	*34,757	28,974	*25,899	19,592	*20,482	14,774	*18,203	13,080					27.0
-3.0 (-10 ft)	kg	*15,061	*15,061	*20,740	*20,740	*14,851	13,262	*11,236	8,944			*8,582	6,788					7.5
	lb	*33,203	*33,203	*45,724	*45,724	*32,741	29,239	*24,772	19,718			*18,921	14,964					25.0
-4.5 (-15 ft)	kg									*17,371	*17,371	*12,713	*12,713	*9,348	9,184			6.2
	lb									*38,297	*38,297	*28,027	*28,027	*20,610	20,248			20.0

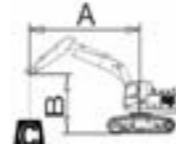


LIFTING CAPACITY

933F with 700 mm (28") Shoes, 6,200 mm (20'4") Boom, 3,050 mm (10'0") Arm **Conditions**

A: Load radius
B: Load point height
C: Lifting capacity rating
Cf: Rating loads over front
Cs: Rating loads over side or 360°

Boom length: 6,200 mm (20'4")
Arm length: 3,050 mm (10'0")
Shoes: 700 mm (28")
Bucket: None
Unit: kg



B (m)	A (Unit: m)												A (m)	
	1.5		3		4.5		6		7.5		MAX REACH			
	Cf	Cs	Cf	Cs	Cf	Cs	Cf	Cs	Cf	Cs	Cf	Cs		
6.0 (20 ft)	kg							*6,977	*6,977	*6,852	*6,852	*6,154	*6,154	8.1
	lb							*15,382	*15,382	*15,107	*15,107	*13,568	*13,568	27.0
4.5 (15 ft)	kg			*9,600	*9,600	*8,032	*8,032	*7,291	*7,291	*6,045	5,934			8.7
	lb			*21,164	*21,164	*17,708	*17,708	*16,075	*16,075	*13,326	13,083			29.0
3.0 (10 ft)	kg			*12,491	*12,491	*9,402	*9,402	*7,980	7,163	*6,197	5,582			9.0
	lb			*27,539	*27,539	*20,727	*20,727	*17,594	15,792	*13,662	12,307			30.0
1.5 (5 ft)	kg			*14,790	13,683	*10,677	9,330	*8,682	6,985	*6,981	5,510			9.0
	lb			*32,607	30,167	*23,540	20,569	*19,141	15,399	*15,392	12,148			30.0
GROUND LEVEL	kg			*15,796	13,407	*11,514	9,117	*9,186	6,860	*7,505	5,621			8.8
	lb			*34,825	29,558	*25,383	20,100	*20,251	15,125	*16,547	12,393			29.0
-1.5 (-5 ft)	kg	*8,654	*8,654	*12,956	*12,956	*15,766	13,371	*11,748	9,043	*9,291	6,820	*8,257	6,038	8.3
	lb	*19,079	*19,079	*28,563	*28,563	*34,757	29,479	*25,899	19,936	*20,482	15,034	*18,203	13,311	27.0
-3.0 (-10 ft)	kg	*15,061	*15,061	*20,740	*20,740	*14,851	13,491	*11,236	9,100			*8,582	6,906	7.5
	lb	*33,203	*33,203	*45,724	*45,724	*32,741	29,743	*24,772	20,062			*18,921	15,225	25.0
-4.5 (-15 ft)	kg			*17,371	*17,371	*12,713	*12,713	*9,348	9,340			*8,879	*8,879	6.2
	lb			*38,297	*38,297	*28,027	*28,027	*20,610	20,592			*19,575	*19,575	20.0

LIFTING CAPACITY

933F with 600 mm (24") Shoes, 6,200 mm (20'4") Boom, 2,600 mm (8'6") Arm **Conditions**

A: Load radius
B: Load point height
C: Lifting capacity rating
Cf: Rating loads over front
Cs: Rating loads over side or 360°

Boom length: 6,200 mm (20'4")
Arm length: 2,600 mm (8'6")
Shoes: 600 mm (24")
Bucket: None
Unit: kg




B (m)	A (Unit: m)												A (m)	
	3		4.5		6		7.5		MAX REACH					
	Cf	Cs	Cf	Cs	Cf	Cs	Cf	Cs	Cf	Cs				
6.0 (20 ft)	kg					*7,558	*7,558	*7,388	7,285	*7,407	7,138			7.6
	lb					*16,661	*16,661	*16,289	16,061	*16,330	15,737			25.0
4.5 (15 ft)	kg			*10,492	*10,492	*8,557	*8,557	*7,700	7,180	*7,551	6,319			8.2
	lb			*23,131	*23,131	*18,864	*18,864	*16,976	15,829	*16,646	13,930			27.0
3.0 (10 ft)	kg			*13,310	*13,310	*9,844	9,414	*8,307	7,006	*7,277	5,823			8.6
	lb			*29,343	*29,343	*21,703	20,754	*18,314	15,445	*16,044	12,837			28.0
1.5 (5 ft)	kg			*15,261	13,262	*10,985	9,095	*8,916	6,842	*8,031	5,745			8.6
	lb			*33,645	29,238	*24,218	20,052	*19,657	15,083	*17,706	12,666			28.0
GROUND LEVEL	kg			*15,836	13,087	*11,644	8,917	*9,299	6,740	*8,319	5,872			8.4
	lb			*34,912	28,851	*25,671	19,659	*20,501	14,858	*18,341	12,947			28.0
-1.5 (-5 ft)	kg	*13,578	*13,578	*15,485	13,119	*11,677	8,884	*9,212	6,735	*8,777	6,435			7.8
	lb	*29,934	*29,934	*34,139	28,923	*25,743	19,585	*20,308	14,849	*19,350	14,186			26.0
-3.0 (-10 ft)	kg	*19,284	*19,284	*14,277	13,298	*10,883	8,994			*9,182	7,579			6.9
	lb	*42,515	*42,515	*31,475	29,316	*23,992	19,829			*20,243	16,708			23.0
-4.5 (-15 ft)	kg	*15,525	*15,525	*11,627	*11,627					*9,318	*9,318			5.5
	lb	*34,226	*34,226	*25,634	*25,634					*20,543	*20,543			18.0

LIFTING CAPACITY

933F with 700 mm (28") Shoes, 6,200 mm (20'4") Boom, 2,600 (8'6") mm Arm **Conditions**

A: Load radius
B: Load point height
C: Lifting capacity rating
Cf: Rating loads over front
Cs: Rating loads over side or 360°

Boom length: 6,200 mm (20'4")
Arm length: 2,600 mm (8'6")
Shoes: 700 mm (28")
Bucket: None
Unit: kg



B (m)	A (Unit: m)												A (m)	
	3		4.5		6		7.5		MAX REACH					
	Cf	Cs	Cf	Cs	Cf	Cs	Cf	Cs	Cf	Cs				
6.0 (20 ft)	kg							*7,558	*7,558	*7,388	*7,388	*7,407	7,254	7.6
	lb							*16,661	*16,661	*16,289	*16,289	*16,330	15,993	25.0
4.5 (15 ft)	kg			*10,492	*10,492	*8,557	*8,557	*7,700	7,298	*7,551	6,425			8.2
	lb			*23,131	*23,131	*18,864	*18,864	*16,976	16,090	*16,646	14,164			27.0
3.0 (10 ft)	kg			*13,310	*13,310	*9,844	9,570	*8,307	7,124	*7,277	5,923			8.6
	lb			*29,343	*29,343	*21,703	21,098	*18,314	15,705	*16,044	13,058			28.0
1.5 (5 ft)	kg			*15,261	13,491	*10,985	9,251	*8,916	6,960	*8,031	5,846			8.6
	lb			*33,645	29,742	*24,218	20,396	*19,657	15,344	*17,706	12,887			28.0
GROUND LEVEL	kg			*15,836	13,316	*11,644	9,073	*9,299	6,858	*8,319	5,976			8.4
	lb			*34,912	29,356	*25,671	20,003	*20,501	15,119	*18,341	13,174			28.0
-1.5 (-5 ft)	kg	*13,578	*13,578	*15,485	13,348	*11,677	9,040	*9,212	6,854	*8,777	6,548			7.8
	lb	*29,934	*29,934	*34,139	29,427	*25,743	19,929	*20,308	15,110	*19,350	14,435			26.0
-3.0 (-10 ft)	kg	*19,284	*19,284	*14,277	13,526	*10,883	9,150			*9,182	7,709			6.9
	lb	*42,515	*42,515	*31,475	29,821	*23,992	20,173			*20,243	16,996			23.0
-4.5 (-15 ft)	kg	*15,525	*15,525	*11,627	*11,627					*9,318	*9,318			5.5
	lb	*34,226	*34,226	*25,634	*25,634					*20,543	*20,543			18.0

LIFTING CAPACITY

936F with 600 mm (24") Shoes, 6,400 mm (21') Boom, 3,200 mm (10'6") Arm **Conditions**

A: Load radius
B: Load point height
C: Lifting capacity rating
Cf: Rating loads over front
Cs: Rating loads over side or 360°

Boom length: 6,400 mm (21')
Arm length: 3,200 mm (10'6")
Shoes: 600 mm (24")
Bucket: None
Unit: kg



B (m)	A (Unit: m)														A (m)
	3		4.5		6		7.5		9		MAX REACH				
	Cf	Cs	Cf	Cs	Cf	Cs	Cf	Cs	Cf	Cs	Cf	Cs			
6.0 (20 ft)	kg							*8,170	6,832			*7,295	5,565	8.5	
	lb							*18,012	15,061			*16,082	12,269	28.0	
4.5 (15 ft)	kg			*9,921	9,196	*8,711	6,626	*7,866	5,001	*6,900	4,910			9.1	
	lb			*21,871	20,273	*19,204	14,608	*17,343	11,025	*15,212	10,824			30.0	
3.0 (10 ft)	kg			*15,350	12,859	*11,374	8,662	*9,449	6,359	8,297	4,891	7,894	4,655	9.3	
	lb			*33,841	28,349	*25,076	19,095	*20,831	14,019	18,292	10,784	17,403	10,262	31.0	
1.5 (5 ft)	kg			*17,566	11,989	*12,641	8,197	*10,145	6,106	8,162	4,770	7,668	4,491	9.4	
	lb			*38,727	26,431	*27,869	18,071	*22,365	13,462	17,995	10,517	16,906	9,901	31.0	
GROUND LEVEL	kg			*18,247	11,632	*13,353	7,906	10,421	5,927	8,072	4,689	7,836	4,562	9.2	
	lb			*40,228	25,644	*29,438	17,429	22,975	13,067	17,796	10,338	17,275	10,057	30.0	
-1.5 (-5 ft)	kg	*15,064	*15,064	*17,779	11,584	*13,353	7,797	10,338	5,855			8,445	4,886	8.7	
	lb	*33,210	*33,210	*39,197	25,538	*29,438	17,190	22,792	12,908			18,619	10,773	29.0	
-3.0 (-10 ft)	kg	*22,032	*22,032	*16,332	11,727	*12,505	7,853	*9,673	5,921			*8,909	5,578	7.9	
	lb	*48,573	*48,573	*36,005	25,854	*27,569	17,312	*21,326	13,054			*19,641	12,297	26.0	
-4.5 (-15 ft)	kg	*17,734	*17,734	*13,554	12,064	*10,284	8,103					*8,699	7,077	6.7	
	lb	*39,098	*39,098	*29,882	26,596	*22,673	17,864					*19,177	15,602	22.0	



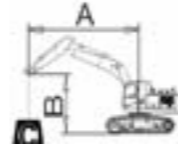
LIFTING CAPACITY

936F with 700 mm (28") Shoes, 6,400 mm (21') Boom, 2,600 mm (8'6") Arm

A: Load radius
B: Load point height
C: Lifting capacity rating
Cf: Rating loads over front
Cs: Rating loads over side or 360°

Conditions

Boom length: 6,400 mm (21')
Arm length: 2,600 mm (8'6")
Shoes: 700 mm (28")
Bucket: None
Unit: kg



B (m)	A (Unit: m)											
	3		4.5		6		7.5		MAX REACH		A (m)	
	Cf	Cs	Cf	Cs	Cf	Cs	Cf	Cs	Cf	Cs		
6.0 (20 ft)	kg					*9,545	*9,545	*8,842	6,829	*8,789	6,269	7.9
	lb					*21,042	*21,042	*19,494	15,055	*19,377	13,821	26.0
4.5 (15 ft)	kg			*13,533	*13,533	*10,644	9,156	*9,249	6,647	*8,775	5,497	8.5
	lb			*29,835	*29,835	*23,465	20,185	*20,391	14,654	*19,347	12,119	28.0
3.0 (10 ft)	kg			*16,443	12,549	*11,956	8,618	*9,869	6,392	8,675	5,109	8.8
	lb			*36,252	27,665	*26,359	18,999	*21,758	14,092	19,126	11,263	29.0
1.5 (5 ft)	kg			*18,007	11,843	*12,995	8,189	*10,420	6,162	8,561	5,006	8.8
	lb			*39,699	26,109	*28,650	18,054	*22,973	13,585	18,873	11,037	29.0
GROUND LEVEL	kg			*17,988	11,677	*13,419	7,960	10,570	6,020	8,770	5,096	8.6
	lb			*39,656	25,743	*29,585	17,550	23,303	13,272	19,335	11,235	28.0
-1.5 (-5 ft)	kg	*15,854	*15,854	*17,057	11,746	*13,103	7,922	*10,338	6,004	*9,336	5,498	8.1
	lb	*34,953	*34,953	*37,605	25,894	*28,888	17,466	*22,792	13,236	*20,582	12,122	27.0
-3.0 (-10 ft)	kg	*19,213	*19,213	*15,194	11,983	*11,840	8,063			*9,429	6,468	7.2
	lb	*42,357	*42,357	*33,497	26,419	*26,104	17,775			*20,787	14,259	24.0
-4.5 (-15 ft)	kg			*11,732	*11,732					*8,979	8,851	5.8
	lb			*25,865	*25,865					*19,796	19,512	19.0

LIFTING CAPACITY

939F with 600 mm (24") Shoes, 6,400 mm (21') Boom, 3,200 mm (10'6") Arm

A: Load radius
B: Load point height
C: Lifting capacity rating
Cf: Rating loads over front
Cs: Rating loads over side or 360°

Conditions

Boom length: 6,400 mm (21')
Arm length: 3,200 mm (10'6")
Shoes: 600 mm (24")
Bucket: None
Unit: kg



B (m)	A (Unit: m)													
	3		4.5		6		7.5		9		MAX REACH		A (m)	
	Cf	Cs	Cf	Cs	Cf	Cs	Cf	Cs	Cf	Cs	Cf	Cs		
6.0 (20 ft)	kg							*8,170	7,101			*7,295	5,797	8.5
	lb							*18,012	15,656			*16,082	12,780	28.0
4.5 (15 ft)	kg					*9,921	9,551	*8,711	6,896	*7,866	5,218	*6,900	5,124	9.1
	lb					*21,871	21,057	*19,204	15,202	*17,343	11,504	*15,212	11,296	30.0
3.0 (10 ft)	kg			*15,350	13,381	*11,374	9,017	*9,449	6,628	*8,377	5,109	*8,025	4,864	9.3
	lb			*33,841	29,499	*25,076	19,879	*20,831	14,613	*18,467	11,262	*17,692	10,723	31.0
1.5 (5 ft)	kg			*17,566	12,511	*12,641	8,552	*10,145	6,376	8,487	4,987	*7,724	4,697	9.4
	lb			*38,727	27,582	*27,869	18,855	*22,365	14,056	18,711	10,995	*17,029	10,356	31.0
GROUND LEVEL	kg			*18,247	12,154	*13,353	8,261	*10,575	6,197	8,397	4,906	8,152	4,773	9.2
	lb			*40,228	26,794	*29,438	18,213	*23,313	13,661	18,513	10,817	17,972	10,523	30.0
-1.5 (-5 ft)	kg	*15,064	*15,064	*17,779	12,106	*13,353	8,153	*10,532	6,124			*8,768	5,112	8.7
	lb	*33,210	*33,210	*39,197	26,689	*29,438	17,974	*23,220	13,502			*19,331	11,271	29.0
-3.0 (-10 ft)	kg	*22,032	*22,032	*16,332	12,249	*12,505	8,208	*9,673	6,191			*8,909	5,831	7.9
	lb	*48,573	*48,573	*36,005	27,004	*27,569	18,096	*21,326	13,648			*19,641	12,855	26.0
-4.5 (-15 ft)	kg	*17,734	*17,734	*13,554	12,586	*10,284	8,458					*8,699	7,386	6.7
	lb	*39,098	*39,098	*29,882	27,746	*22,673	18,647					*19,177	16,284	22.0

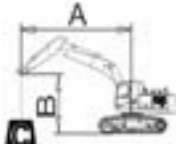
LIFTING CAPACITY

939F with 700 mm (28") Shoes, 6,400 mm (21') Boom, 3,200 mm (10'6") Arm

A: Load radius
B: Load point height
C: Lifting capacity rating
Cf: Rating loads over front
Cs: Rating loads over side or 360°

Conditions

Boom length: 6,400 mm (21')
Arm length: 3,200 mm (10'6")
Shoes: 700 mm (28")
Bucket: None
Unit: kg



B (m)	A (Unit: m)													
	3		4.5		6		7.5		9		MAX REACH		A (m)	
	Cf	Cs	Cf	Cs	Cf	Cs	Cf	Cs	Cf	Cs	Cf	Cs		
6.0 (20 ft)	kg							*8,170	7,209			*7,295	5,890	8.5
	lb							*18,012	15,893			*16,082	12,985	28.0
4.5 (15 ft)	kg					*9,921	9,693	*8,711	7,004	*7,866	5,305	*6,900	5,210	9.1
	lb					*21,871	21,370	*19,204	15,440	*17,343	11,695	*15,212	11,485	30.0
3.0 (10 ft)	kg			*15,350	13,589	*11,374	9,159	*9,449	6,736	*8,377	5,195	*8,025	4,947	9.3
	lb			*33,841	29,959	*25,076	20,193	*20,831	14,851	*18,467	11,454	*17,692	10,907	31.0
1.5 (5 ft)	kg			*17,566	12,720	*12,641	8,695	*10,145	6,483	8,617	5,074	*7,724	4,780	9.4
	lb			*38,727	28,042	*27,869	19,168	*22,365	14,294	18,998	11,187	*17,029	10,538	31.0
GROUND LEVEL	kg			*18,247	12,362	*13,353	8,403	*10,575	6,304	8,528	4,993	*8,272	4,858	9.2
	lb			*40,228	27,255	*29,438	18,526	*23,313	13,899	18,800	11,008	*18,238	10,710	30.0
-1.5 (-5 ft)	kg	*15,064	*15,064	*17,779	12,315	*13,353	8,295	*10,532	6,232			*8,768	5,203	8.7
	lb	*33,210	*33,210	*39,197	27,149	*29,438	18,287	*23,220	13,739			*19,331	11,470	29.0
-3.0 (-10 ft)	kg	*22,032	*22,032	*16,332	12,458	*12,505	8,350	*9,673	6,298			*8,909	5,932	7.9
	lb	*48,573	*48,573	*36,005	27,465	*27,569	18,410	*21,326	13,886			*19,641	13,079	26.0
-4.5 (-15 ft)	kg	*17,734	*17,734	*13,554	12,794	*10,284	8,600					*8,699	7,510	6.7
	lb	*39,098	*39,098	*29,882	28,207	*22,673	18,961					*19,177	16,557	22.0

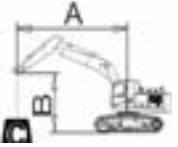
LIFTING CAPACITY

939F with 600 mm (24") Shoes, 6,400 mm (21') Boom, 2,900 mm (9'6") Arm

A: Load radius
B: Load point height
C: Lifting capacity rating
Cf: Rating loads over front
Cs: Rating loads over side or 360°

Conditions

Boom length: 6,400 mm (21')
Arm length: 2,900 mm (9'6")
Shoes: 600 mm (24")
Bucket: None
Unit: kg



B (m)	A (Unit: m)													
	3		4.5		6		7.5		9		MAX REACH		A (m)	
	Cf	Cs	Cf	Cs	Cf	Cs	Cf	Cs	Cf	Cs	Cf	Cs		
6.0 (20 ft)	kg							*8,501	7,046			*8,156	6,096	8.2
	lb							*18,740	15,535			*17,981	13,438	27.0
4.5 (15 ft)	kg					*12,911	*12,911	*10,290	9,459	*8,982	6,850	*7,922	5,370	8.8
	lb					*28,464	*28,464	*22,686	20,853	*19,802	15,102	*17,465	11,839	29.0
3.0 (10 ft)	kg			*15,911	13,131	*11,677	8,923	*9,664	6,589	*8,565	5,089	*8,051	5,005	9.1
	lb			*35,077	28,948	*25,743	19,673	*21,306	14,525	*18,883	11,219	*17,748	11,035	30.0
1.5 (5 ft)	kg			*17,828	12,333	*12,833	8,476	*10,290	6,347	8,484	4,984	*8,353	4,911	9.1
	lb			*39,304	27,190	*28,292	18,687	*22,685	13,992	18,704	10,989	*18,414	10,826	30.0
GROUND LEVEL	kg			*18,167	12,068	*13,403	8,216	*10,628	6,185			*8,547	4,995	8.9
	lb			*40,052	26,604	*29,548	18,112	*23,430	13,637			*18,843	11,011	29.0
-1.5 (-5 ft)	kg	*15,508	*15,508	*17,457	12,079	*13,246	8,141	*10,454	6,139			*9,050	5,368	8.4
	lb	*34,188	*34,188	*38,487	26,630	*29,203	17,948	*23,048	13,534			*19,951	11,834	28.0
-3.0 (-10 ft)	kg	*20,689	*20,689	*15,796	12,269	*12,199	8,236					*9,285	6,257	7.5
	lb	*45,612	*45,612	*34,823	27,049	*26,895	18,158					*20,471	13,794	25.0
-4.5 (-15 ft)	kg	*16,171	*16,171	*12,694	12,667	*9,507	8,562					*8,760	8,074	6.3
	lb	*35,650	*35,650	*27,984	27,926	*20,960	18,875					*19,313	17,801	21.0

**LIFTING CAPACITY****939F with 700 mm (28") Shoes, 6,400 mm (21') Boom, 2,900 mm (9'6") Arm****Conditions**

A: Load radius
 B: Load point height
 C: Lifting capacity rating
 Cf: Rating loads over front
 Cs: Rating loads over side or 360°

Boom length: 6,400 mm (21')
 Arm length: 2,900 mm (9'6")
 Shoes: 700 mm (28")
 Bucket: None
 Unit: kg

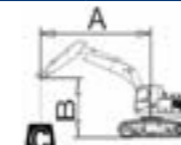


B (m)	A (Unit: m)												MAX REACH	A (m)			
	3		4.5		6		7.5		9								
	Cf	Cs	Cf	Cs	Cf	Cs	Cf	Cs	Cf	Cs	Cf	Cs					
6.0 (20 ft)	kg												*8,501	7,154	*8,156	6,192	8.2
	lb												*18,740	15,772	*17,981	13,652	27.0
4.5 (15 ft)	kg			*12,911	*12,911	*10,290	9,601	*8,982	6,958				*7,922	5,459	*7,922	5,459	8.8
	lb			*28,464	*28,464	*22,686	21,167	*19,802	15,339				*17,465	12,036	*17,465	12,036	29.0
3.0 (10 ft)	kg			*15,911	13,339	*11,677	9,066	*9,664	6,696	*8,565	5,176		*8,051	5,091	*8,051	5,091	9.1
	lb			*35,077	29,408	*25,743	19,986	*21,306	14,763	*18,883	11,410		*17,748	11,224	*17,748	11,224	30.0
1.5 (5 ft)	kg			*17,828	12,542	*12,833	8,618	*10,290	6,455	8,614	5,071		8,481	4,996			9.1
	lb			*39,304	27,650	*28,292	19,000	*22,685	14,230	18,991	11,180		18,697	11,015			30.0
GROUND LEVEL	kg			*18,167	12,276	*13,403	8,358	*10,628	6,293				8,679	5,083			8.9
	lb			*40,052	27,065	*29,548	18,426	*23,430	13,874				19,134	11,205			29.0
-1.5 (-5 ft)	kg		*15,508	*15,508	*17,457	12,288	*13,246	8,283	*10,454	6,247			*9,050	5,462			8.4
	lb		*34,188	*34,188	*38,487	27,090	*29,203	18,262	*23,048	13,772			*19,951	12,041			28.0
-3.0 (-10 ft)	kg		*20,689	*20,689	*15,796	12,478	*12,199	8,378					*9,285	6,365			7.5
	lb		*45,612	*45,612	*34,823	27,509	*26,895	18,471					*20,471	14,031			25.0
-4.5 (-15 ft)	kg		*16,171	*16,171	*12,694	*12,694	*9,507	8,704					*8,760	8,208			6.3
	lb		*35,650	*35,650	*27,984	*27,984	*20,960	19,189					*19,313	18,095			21.0

LIFTING CAPACITY**939F with 600 mm (24") Shoes, 6,400 mm (21') Boom, 2,600 mm (8'6") Arm****Conditions**

A: Load radius
 B: Load point height
 C: Lifting capacity rating
 Cf: Rating loads over front
 Cs: Rating loads over side or 360°

Boom length: 6,400 mm (21')
 Arm length: 2,600 mm (8'6")
 Shoes: 600 mm (24")
 Bucket: None
 Unit: kg

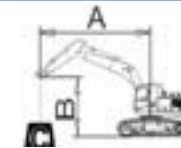


B (m)	A (Unit: m)												MAX REACH	A (m)					
	3		4.5		6		7.5		9										
	Cf	Cs	Cf	Cs	Cf	Cs	Cf	Cs	Cf	Cs	Cf	Cs							
6.0 (20 ft)	kg												*9,545	*9,545	*8,842	6,991	*8,789	6,421	7.9
	lb												*21,042	*21,042	*19,494	15,412	*19,377	14,156	26.0
4.5 (15 ft)	kg			*13,533	*13,533	*10,644	9,369	*9,249	6,809	*8,775	5,637								8.5
	lb			*29,835	*29,835	*23,465	20,655	*20,391	15,010	*19,347	12,427								28.0
3.0 (10 ft)	kg			*16,443	12,862	*11,956	8,831	*9,869	6,554	*8,865	5,243								8.8
	lb			*36,252	28,356	*26,359	19,469	*21,758	14,449	*19,545	11,558								29.0
1.5 (5 ft)	kg			*18,007	12,156	*12,995	8,402	*10,420	6,324	8,762	5,140								8.8
	lb			*39,699	26,800	*28,650	18,524	*22,973	13,941	19,316	11,332								29.0
GROUND LEVEL	kg			*17,988	11,990	*13,419	8,174	*10,661	6,182	8,977	5,233								8.6
	lb			*39,656	26,433	*29,585	18,020	*23,504	13,628	19,791	11,538								28.0
-1.5 (-5 ft)	kg		*15,854	*15,854	*17,057	12,059	*13,103	8,136	*10,338	6,166	*9,336	5,646							8.1
	lb		*34,953	*34,953	*37,605	26,585	*28,888	17,936	*22,792	13,593	*20,582	12,447							27.0
-3.0 (-10 ft)	kg		*19,213	*19,213	*15,194	12,296	*11,840	8,276					*9,429	6,638					7.2
	lb		*42,357	*42,357	*33,497	27,109	*26,104	18,245					*20,787	14,634					24.0
-4.5 (-15 ft)	kg			*11,732	*11,732								*8,979	*8,979					5.8
	lb			*25,865	*25,865								*19,796	*19,796					19.0

LIFTING CAPACITY**939F with 700 mm (28") Shoes, 6,400 mm (21') Boom, 2,600 mm (8'6") Arm****Conditions**

A: Load radius
 B: Load point height
 C: Lifting capacity rating
 Cf: Rating loads over front
 Cs: Rating loads over side or 360°

Boom length: 6,400 mm (21')
 Arm length: 2,600 mm (8'6")
 Shoes: 700 mm (28")
 Bucket: None
 Unit: kg

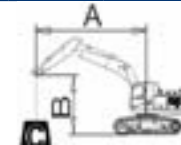


B (m)	A (Unit: m)												MAX REACH	A (m)					
	3		4.5		6		7.5		9										
	Cf	Cs	Cf	Cs	Cf	Cs	Cf	Cs	Cf	Cs	Cf	Cs							
6.0 (20 ft)	kg												*9,545	*9,545	*8,842	7,098	*8,789	6,522	7.9
	lb												*21,042	*21,042	*19,494	15,649	*19,377	14,380	26.0
4.5 (15 ft)	kg			*13,533	*13,533	*10,644	9,511	*9,249	6,916	*8,775	5,729								8.5
	lb			*29,835	*29,835	*23,465	20,968	*20,391	15,248	*19,347	12,631								28.0
3.0 (10 ft)	kg			*16,443	13,071	*11,956	8,973	*9,869	6,662	*8,865	5,332								8.8
	lb			*36,252	28,816	*26,359	19,783	*21,758	14,687	*19,545	11,755								29.0
1.5 (5 ft)	kg			*18,007	12,365	*12,995	8,544	*10,420	6,432	8,895	5,229								8.8
	lb			*39,699	27,260	*28,650	18,837	*22,973	14,179	19,611	11,528								29.0
GROUND LEVEL	kg			*17,988	12,199	*13,419	8,316	*10,661	6,289	9,115	5,325								8.6
	lb			*39,656	26,894	*29,585	18,334	*23,504	13,866	20,095	11,740								28.0
-1.5 (-5 ft)	kg		*15,854	*15,854	*17,057	12,267	*13,103	8,278	*10,338	6,273	*9,336	5,744							8.1
	lb		*34,953	*34,953	*37,605	27,045	*28,888	18,250	*22,792	13,831	*20,582	12,664							27.0
-3.0 (-10 ft)	kg		*19,213	*19,213	*15,194	12,505	*11,840	8,418					*9,429	6,751					7.2
	lb		*42,357	*42,357	*33,497	27,569	*26,104	18,559					*20,787	14,883					24.0
-4.5 (-15 ft)	kg			*11,732	*11,732								*8,979	*8,979					5.8
	lb			*25,865	*25,865								*19,796	*19,796					19.0

LIFTING CAPACITY**942F with 600 mm (24") Shoes, 6,400 mm (21') Boom, 3,200 mm (10'6") Arm****Conditions**

A: Load radius
 B: Load point height
 C: Lifting capacity rating
 Cf: Rating loads over front
 Cs: Rating loads over side or 360°

Boom length: 6,400 mm (21')
 Arm length: 3,200 mm (10'6")
 Shoes: 600 mm (24")
 Bucket: None
 Unit: kg



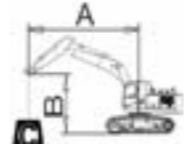
B (m)	A (Unit: m)												MAX REACH	A (m)				
	3		4.5		6		7.5		9									
	Cf	Cs	Cf	Cs	Cf	Cs	Cf	Cs	Cf	Cs	Cf	Cs						
6.0 (20 ft)	kg												*8,170	7,651		*7,295	6,256	8.5
	lb												*18,012	16,868		*16,082	13,792	28.0
4.5 (15 ft)	kg					*9,921	*9,921	*8,711	7,443	*7,866	5,641	*6,900	5,541					9.1
	lb					*21,871	*21,871	*19,204	16,409	*17,343	12,437	*15,212	12,215					30.0
3.0 (10 ft)	kg			*15,350	14,608	*11,374	9,776	*9,449	7,172	*8,377	5,531	*8,025	5,268					9.3
	lb			*33,841	32,205	*25,076	21,552	*20,831	15,812	*18,467	12,193	*17,692	11,613					31.0
1.5 (5 ft)	kg			*17,566	13,717	*12,641	9,304	*10,145	6,917	*8,674	5,408	*7,724	5,095					9.4
	lb			*38,727	30,241	*27,869	20,511	*22,365	15,248	*19,122	11,923	*17,029	11,232					31.0
GROUND LEVEL	kg			*18,247	13,352	*13,353	9,008	*10,575	6,735	*8,769	5,327	*8,272	5,181					9.2
	lb			*40,228	29,435	*29,438	19,859	*23,313	14,849	*19,333	11,743	*18,238	11,423					30.0
-1.5 (-5 ft)	kg		*15,064	*15,064	*17,779	13,303	*13,353	8,898	*10,532	6,662			*8,768	5,552				8.7
	lb		*33,210	*33,210	*39,197	29,327	*											

LIFTING CAPACITY

942F with 700 mm (28") Shoes, 6,400 mm (21') Boom, 3,200 mm (10'6") Arm **Conditions**

A: Load radius
 B: Load point height
 C: Lifting capacity rating
 Cf: Rating loads over front
 Cs: Rating loads over side or 360°

Boom length: 6,400 mm (21')
 Arm length: 3,200 mm (10'6")
 Shoes: 700 mm (28")
 Bucket: None
 Unit: kg



B (m)	A (Unit: m)												MAX REACH	A (m)				
	3		4.5		6		7.5		9									
	Cf	Cs	Cf	Cs	Cf	Cs	Cf	Cs	Cf	Cs	Cf	Cs						
6.0 (20 ft)	kg																	
	lb																	
4.5 (15 ft)	kg					*9,921	*9,921	*8,711	7,556	*7,866	5,732	*6,900	5,630	9.1				
	lb					*21,871	*21,871	*19,204	16,658	*17,343	12,637	*15,212	12,412	30.0				
3.0 (10 ft)	kg			*15,350	14,829	*11,374	9,925	*9,449	7,285	*8,377	5,621	*8,025	5,355	9.3				
	lb			*33,841	32,692	*25,076	21,882	*20,831	16,061	*18,467	12,393	*17,692	11,806	31.0				
1.5 (5 ft)	kg			*17,566	13,938	*12,641	9,453	*10,145	7,029	*8,674	5,499	*7,724	5,181	9.4				
	lb			*38,727	30,728	*27,869	20,841	*22,365	15,497	*19,122	12,123	*17,029	11,421	31.0				
GROUND LEVEL	kg			*18,247	13,572	*13,353	9,157	*10,575	6,848	*8,769	5,417	*8,272	5,270	9.2				
	lb			*40,228	29,922	*29,438	20,188	*23,313	15,098	*19,333	11,943	*18,238	11,617	30.0				
-1.5 (-5 ft)	kg	*15,064	*15,064	*17,779	13,523	*13,353	9,047	*10,532	6,775			*8,768	5,646	8.7				
	lb	*33,210	*33,210	*39,197	29,814	*29,438	19,945	*23,220	14,936			*19,331	12,448	29.0				
-3.0 (-10 ft)	kg	*22,032	*22,032	*16,332	13,670	*12,505	9,103	*9,673	6,842			*8,909	6,438	7.9				
	lb	*48,573	*48,573	*36,005	30,137	*27,569	20,070	*21,326	15,084			*19,641	14,194	26.0				
-4.5 (-15 ft)	kg	*17,734	*17,734	*13,554	*13,554	*10,284	9,358					*8,699	8,152	6.7				
	lb	*39,098	*39,098	*29,882	*29,882	*22,673	20,630					*19,177	17,973	22.0				

LIFTING CAPACITY

942F with 600 mm (24") Shoes, 6,400 mm (21') Boom, 2,900 mm (9'6") Arm **Conditions**

A: Load radius
 B: Load point height
 C: Lifting capacity rating
 Cf: Rating loads over front
 Cs: Rating loads over side or 360°

Boom length: 6,400 mm (21')
 Arm length: 2,900 mm (9'6")
 Shoes: 600 mm (24")
 Bucket: None
 Unit: kg



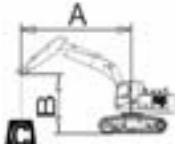
B (m)	A (Unit: m)												MAX REACH	A (m)				
	3		4.5		6		7.5		9									
	Cf	Cs	Cf	Cs	Cf	Cs	Cf	Cs	Cf	Cs	Cf	Cs						
6.0 (20 ft)	kg																	
	lb																	
4.5 (15 ft)	kg			*12,911	*12,911	*10,290	10,225	*8,982	7,397			*7,922	5,806	8.8				
	lb			*28,464	*28,464	*22,686	22,542	*19,802	16,307			*17,465	12,801	29.0				
3.0 (10 ft)	kg			*15,911	14,352	*11,677	9,681	*9,664	7,132	*8,565	5,511	*8,051	5,421	9.1				
	lb			*35,077	31,640	*25,743	21,343	*21,306	15,724	*18,883	12,149	*17,748	11,952	30.0				
1.5 (5 ft)	kg			*17,828	13,535	*12,833	9,226	*10,290	6,887	*8,780	5,405	*8,697	5,326	9.1				
	lb			*39,304	29,840	*28,292	20,341	*22,685	15,184	*19,357	11,917	*19,173	11,741	30.0				
GROUND LEVEL	kg			*18,167	13,263	*13,403	8,962	*10,628	6,724			*8,867	5,421	8.9				
	lb			*40,052	29,240	*29,548	19,757	*23,430	14,824			*19,548	11,952	29.0				
-1.5 (-5 ft)	kg	*15,508	*15,508	*17,457	13,275	*13,246	8,886	*10,454	6,677			*9,050	5,829	8.4				
	lb	*34,188	*34,188	*38,487	29,267	*29,203	19,590	*23,048	14,720			*19,951	12,850	28.0				
-3.0 (-10 ft)	kg	*20,689	*20,689	*15,796	13,470	*12,199	8,983					*9,285	6,796	7.5				
	lb	*45,612	*45,612	*34,823	29,696	*26,895	19,803					*20,471	14,983	25.0				
-4.5 (-15 ft)	kg	*16,171	*16,171	*12,694	*12,694	*9,507	9,313					*8,760	*8,760	6.3				
	lb	*35,650	*35,650	*27,984	*27,984	*20,960	20,532					*19,313	*19,313	21.0				

LIFTING CAPACITY

942F with 700 mm (28") Shoes, 6,400 mm (21') Boom, 2,900 mm (9'6") Arm **Conditions**

A: Load radius
 B: Load point height
 C: Lifting capacity rating
 Cf: Rating loads over front
 Cs: Rating loads over side or 360°

Boom length: 6,400 mm (21')
 Arm length: 2,900 mm (9'6")
 Shoes: 700 mm (28")
 Bucket: None
 Unit: kg



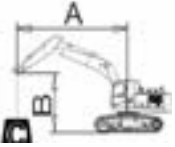
B (m)	A (Unit: m)												MAX REACH	A (m)				
	3		4.5		6		7.5		9									
	Cf	Cs	Cf	Cs	Cf	Cs	Cf	Cs	Cf	Cs	Cf	Cs						
6.0 (20 ft)	kg																	
	lb																	
4.5 (15 ft)	kg			*12,911	*12,911	*10,290	*10,290	*8,982	7,510			*7,922	5,899	8.8				
	lb			*28,464	*28,464	*22,686	*22,686	*19,802	16,556			*17,465	13,006	29.0				
3.0 (10 ft)	kg			*15,911	14,573	*11,677	9,830	*9,664	7,245	*8,565	5,601	*8,051	5,511	9.1				
	lb			*35,077	32,127	*25,743	21,672	*21,306	15,972	*18,883	12,349	*17,748	12,149	30.0				
1.5 (5 ft)	kg			*17,828	13,756	*12,833	9,376	*10,290	7,000	*8,780	5,496	*8,697	5,415	9.1				
	lb			*39,304	30,327	*28,292	20,670	*22,685	15,433	*19,357	12,117	*19,173	11,938	30.0				
GROUND LEVEL	kg			*18,167	13,484	*13,403	9,111	*10,628	6,837			*8,867	5,513	8.9				
	lb			*40,052	29,728	*29,548	20,086	*23,430	15,073			*19,548	12,154	29.0				
-1.5 (-5 ft)	kg	*15,508	*15,508	*17,457	13,496	*13,246	9,035	*10,454	6,790			*9,050	5,927	8.4				
	lb	*34,188	*34,188	*38,487	29,754	*29,203	19,920	*23,048	14,969			*19,951	13,067	28.0				
-3.0 (-10 ft)	kg	*20,689	*20,689	*15,796	13,691	*12,199	9,132					*9,285	6,909	7.5				
	lb	*45,612	*45,612	*34,823	30,183	*26,895	20,132					*20,471	15,232	25.0				
-4.5 (-15 ft)	kg	*16,171	*16,171	*12,694	*12,694	*9,507	9,463					*8,760	*8,760	6.3				
	lb	*35,650	*35,650	*27,984	*27,984	*20,960	20,862					*19,313	*19,313	21.0				

LIFTING CAPACITY

942F with 600 mm (24") Shoes, 6,400 mm (21') Boom, 2,600 mm (8'6") Arm **Conditions**

A: Load radius
 B: Load point height
 C: Lifting capacity rating
 Cf: Rating loads over front
 Cs: Rating loads over side or 360°

Boom length: 6,400 mm (21')
 Arm length: 2,600 mm (8'6")
 Shoes: 600 mm (24")
 Bucket: None
 Unit: kg



B (m)	A (Unit: m)												MAX REACH	A (m)				
	3		4.5		6		7.5		9									
	Cf	Cs	Cf	Cs	Cf	Cs	Cf	Cs	Cf	Cs	Cf	Cs						
6.0 (20 ft)	kg																	
	lb																	
4.5 (15 ft)	kg			*13,533	*13,533	*10,644	10,134	*9,249	7,355	*8,775	6,094	*8,775	6,094	8.5				
	lb			*29,835	*29,835	*23,465	22,341	*20,391	16,214	*19,347	13,435	*19,347	13,435	28.0				
3.0 (10 ft)	kg			*16,443	14,077	*11,956	9,587	*9,869	7,097	*8,865	5,678	*8,865	5,678	8.8				
	lb			*36,252	31,034	*26,359	21,136	*21,758	15,646	*19,545	12,517	*19,545	12,517	29.0				
1.5 (5 ft)	kg			*18,007	13,354	*12,995	9,151	*10,420	6,864	*9,048	5,574	*9,048	5,574	8.8				
	lb			*39,699	29,441	*28,650	20,175	*22,973	15,133	*19,947	12,288	*19,947	12,288	29.0				
GROUND LEVEL	kg			*17,988	13,184	*13,419	8,919	*10,661	6,720	*9,204	5,680	*9,204	5,680	8.6				
	lb			*39,656	29,066	*29,585	19,663	*23,504	14,815	*20,290	12,523	*20,290	12,523	28.0				
-1.5 (-5 ft)	kg	*15,854	*15,854	*17,057	13,254	*13,103	8,880	*10,338	6,704	*9,336	6,130	*9,336	6,130	8.1				
	lb	*34,953	*34,953	*37,605	29,220	*28,888	19,578	*22,792	14,780	*20,582	13,515	*20,582	13,515	27.0				
-3.0 (-10 ft)	kg	*19,213	*19,213	*15,194	13,498	*11,840	9,023					*9,429	7,210	7.2				
	lb	*42,357	*42,357	*33,497	29,757	*26,104	19,892					*20,787	15,895	24.0				
-4.5 (-15 ft)	kg			*11,732	*11,732							*8,979	*8,979	5.8				
	lb			*25,865	*25,865							*19,796	*19,796	19.0				

STANDARD EQUIPMENT

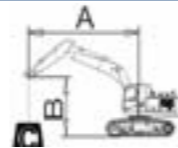
LIFTING CAPACITY

942F with 700 mm (28") Shoes, 6,400 mm (21') Boom, 2,600 mm (8'6") Arm

A: Load radius
B: Load point height
C: Lifting capacity rating
Cf: Rating loads over front
Cs: Rating loads over side or 360°

Conditions

Boom length: 6,400 mm (21')
Arm length: 2,600 mm (8'6")
Shoes: 700 mm (28")
Bucket: None
Unit: kg



B (m)		A (Unit: m)										
		3		4.5		6		7.5		MAX REACH		
		Cf	Cs	Cf	Cs	Cf	Cs	Cf	Cs	Cf	Cs	A (m)
6.0 (20 ft)	kg					*9,545	*9,545	*8,842	7,652	*8,789	7,035	7.9
	lb					*21,042	*21,042	*19,494	16,869	*19,377	15,510	26.0
4.5 (15 ft)	kg			*13,533	*13,533	*10,644	10,283	*9,249	7,468	*8,775	6,191	8.5
	lb			*29,835	*29,835	*23,465	22,670	*20,391	16,463	*19,347	13,648	28.0
3.0 (10 ft)	kg			*16,443	14,298	*11,956	9,736	*9,869	7,210	*8,865	5,771	8.8
	lb			*36,252	31,521	*26,359	21,465	*21,758	15,895	*19,545	12,722	29.0
1.5 (5 ft)	kg			*18,007	13,575	*12,995	9,301	*10,420	6,977	*9,048	5,667	8.8
	lb			*39,699	29,928	*28,650	20,504	*22,973	15,381	*19,947	12,493	29.0
GROUND LEVEL	kg			*17,988	13,405	*13,419	9,068	*10,661	6,833	*9,204	5,776	8.6
	lb			*39,656	29,553	*29,585	19,992	*23,504	15,064	*20,290	12,734	28.0
-1.5 (-5 ft)	kg	*15,854	*15,854	*17,057	13,475	*13,103	9,030	*10,338	6,817	*9,336	6,233	8.1
	lb	*34,953	*34,953	*37,605	29,707	*28,888	19,907	*22,792	15,028	*20,582	13,742	27.0
-3.0 (-10 ft)	kg	*19,213	*19,213	*15,194	13,719	*11,840	9,172			*9,429	7,328	7.2
	lb	*42,357	*42,357	*33,497	30,244	*26,104	20,221			*20,787	16,156	24.0
-4.5 (-15 ft)	kg			*11,732	*11,732					*8,979	*8,979	5.8
	lb			*25,865	*25,865					*19,796	*19,796	19.0

ENGINE SYSTEM

930F 930F DM 936F 939F DM 942F

Cummins B6.7 engine, Rate power 173kW, EPA Tier 4F/EU Stage V, turbocharged, 6 cylinder, 4 stroke, water cooled.

Cummins L9 engine, Rate power 231kW, EPA Tier 4F/EU Stage V, turbocharged, 6 cylinder, 4 stroke, water cooled.

Engine overheat prevention system

Auto-idle speed control

Automatic engine shutdown

Radial seal air filters (primary and secondary filter)

Cleanable metal fuel tank

Fuel pre-filter with water separator and water detection

Electric fuel lifting pump

Remote engine oil filter

Variable fan with viscous clutch

Removable Radiator dustproof net

Air conditioner compressor belt automatic tense

Cold starting kit for -20° C

Engine oil low pressure protection

Automatic warming up

Coolant level warning

Supercharger thermal protection

DEF level alarm

Fuel pressure differential gauge

Air prefilter

Warning for air filter block

Drain coolant at outer side of radiator

Coolant level observed on ground

Easy to drain engine oil (bottom cover with drain valve)

Fuel shut-off valve

Water drainable fuel tank(with water valve)

HYDRAULIC SYSTEM

930F 930F DM 936F 939F DM 942F

Full electric control hydraulic system

3-power modes (Power, Standard, Economy)

Power boost function

Pilot control shut-off lever

Pilot accumulator

Low force joystick

Automatic swing parking brake

Swing with anti-reverse function

Boom and arm regeneration circuits
 Boom and arm holding valves
 Automatic two-speed travel
 Automatic travel parking brake
 Pressure checking port for main pump
 MCV with auxiliary valve
 Boom and arm down lock valve
 Hydraulic oil level visible
 Hydraulic pump with PTO port

OPERATOR STATION

930F 930F DM 936F 939F DM 942F

Pressurized and sealed cab with all-around visibility
 ROPS certified cab
 Lower windshield can be removable
 Openable front windshield with assist device
 Large roof window with slide sliding sun visor
 Air suspension deluxe seat (with heater and head rest) +retractable seat belt (75 mm [3 in] width, red colour, with green alarm lamp)
 Consoles and seat height adjustable follow-up
 8 inches high resolution LCD touch screen + integrated control panel
 Washable floor mat
 Fire extinguisher
 Safety hammer for cab evacuation
 Green safety glass
 Cab interior lighting
 Cab emergency exit
 Fire extinguisher bracket
 Travel control pedals with removable hand levers
 Sliding upper door window(left-hand cab door)
 Rear view mirror, mounted in the LH cab

ELECTRICAL SYSTEM

930F 930F DM 936F 939F DM 942F

Monitor: working mode, working hour, water temperature, oil temperature, fuel level, DEF level, fuel consumption, rear vision, fault code, work condition etc. machine information.
 Warn: low engine oil pressure, low fuel level, air filter clog, machine overheat, maintenance remind etc.
 Front window wiper with time adjustable intermittent feature
 AM/FM radio with auxiliary input
 Blue tooth
 Working lights close time delay by programmable
 Cab interior decoration lights close time delay by programmable
 2 stereo speakers
 Battery disconnect switch
 Emergency stop on ground
 Set password for auxiliary hydraulic-flow adjustments
 Work tool flow and pressure programmable memories
 Front window wiper gating switch

Instantaneous fuel consumption display
 2 Batteries
 Language display (full graphic and full color display)
 Engine auto pre-heater
 Plateau mode (plateau adaptive function)
 Travel alarm
 Auto power boost

UNDERCARRIAGE

930F 930F DM 936F 939F DM 942F

Guard package: HD bottom guard
 Rollers, bottom - 9 each side
 Rollers, top - 2 each side
 Centralized lubrication for swing bearing
 Towing eye on base frame
 Guard package: Heavy-duty travel motor guard

UPPER STRUCTURE

930F 930F DM 936F 939F DM 942F

Frame handrail
 Punched metal anti-slip plates
 Foot pedal is in engine room
 Engine chamber and main pump chamber separated by fire board
 Side door brace automatically lock
 Rearview mirror mounted in the RH machine
 Lockable tool box
 Grease point in front of platform
 Counterweight reserved rear view instrument installation

DIGGING EQUIPMENT

930F 930F DM 936F 939F DM 942F

6200 mm boom
 6400 mm boom
 Arm front end with guard bars
 Manual centralized lubrication on boom
 Manual centralized lubrication on arm
 Hammer pipe support
 Quick coupler pipe support

AIR CONDITIONING SYSTEM

930F 930F DM 936F 939F DM 942F

Automatic air conditioner, heater, defroster
 Refrigerant observation hole on side
 Wind renewal function

SERVICE AND MAINTENANCE

930F 930F DM 936F 939F DM 942F

Maintenance tool kit
 Maintenance parts package
 Data diagnostic port
 Self-diagnostic system

OPTIONAL EQUIPMENT

ENGINE SYSTEM

	930F	930F DM	936F	939F DM	942F
Electric re-fueling pump with auto shutoff					
Cold starting kit for -35° C					

HYDRAULIC SYSTEM

	930F	930F DM	936F	939F DM	942F
Hand proportional control auxiliary dual way pipes					
Hand proportional control auxiliary swing pipes	-				
PTO max flow with monitor control	-				
Auxiliary single-double hydraulic lines exchange on the monitor					
Auxiliary dual pipe flow & pressure adjustable					
High pressure quick-coupler pipes					
Low pressure quick-coupler pipes					
Attachment oil drain line	-				
Additional filter for breaker piping					
Boom drift function (Use with holding valves)					
Straight travel with one pedal					
Control pattern-change valve (BHL-SAE)					
Long-life hydraulic oil (replacement cycle 5000h)		-			
PTO pump pipeline	-				
Hammer piping pipeline					

OPERATOR STATION

	930F	930F DM	936F	939F DM	942F
Openable cab front guard	-				
Cab front guard and top guard (falling object protective structure)	-				
Transparent cab skylight					
Sunscreen					
Front window rain visor		-	-	-	-
Left armrest box can be reversed					
2 alarm mounted bracket on cab roof	-				

ELECTRICAL SYSTEM

	930F	930F DM	936F	939F DM	942F
Overload warning device					
Rotating warning light	-		-	-	-
Travel alarm	-	-			
Rotating beacon					
Quicker-coupler opening warning					
Starting code	-				
Right platform working light					
4 boom working lights					
360° view					

Machine rear lighting					
Work lights: separately installed LED in front and rear cab (4 front and 2 rear)		-	-	-	-
Work lights: long strip LED light in front and rear cab	-				
Capability to electrically connect beacon					
12V power supply					

UNDERCARRIAGE

	930F	930F DM	936F	939F DM	942F
942F undercarriage (Length to center of Rollers 42500mm, Track Gauge 2740mm)	-	-	-	-	
Heavy duty undercarriage (Length to center of Rollers 4140mm,Track Gauge 2590mm)					-
600mm track-shoes with triple grousers					
700mm track-shoes with triple grousers					
800mm track-shoes with triple grousers					
900mm track-shoes with triple grousers					
Auxiliary tarck footrest					
2 piece track guards (each side)					-
3 piece track guards (each side)					-

UPPER STRUCTURE

	930F	930F DM	936F	939F DM	942F
Guard rails of upper frame sides					
Guard fence of upper frame around	-				
Assembly Upper frame guard	-		-		
Standard frame undercover		-	-	-	-
Reinforced frame undercover	-				
5800kg counterweight		-	-	-	-
6700kg counterweight	-		-	-	-
7700kg counterweight	-	-		-	-
8500 kg counterweight	-	-	-		-
9000 kg counterweight	-	-	-	-	

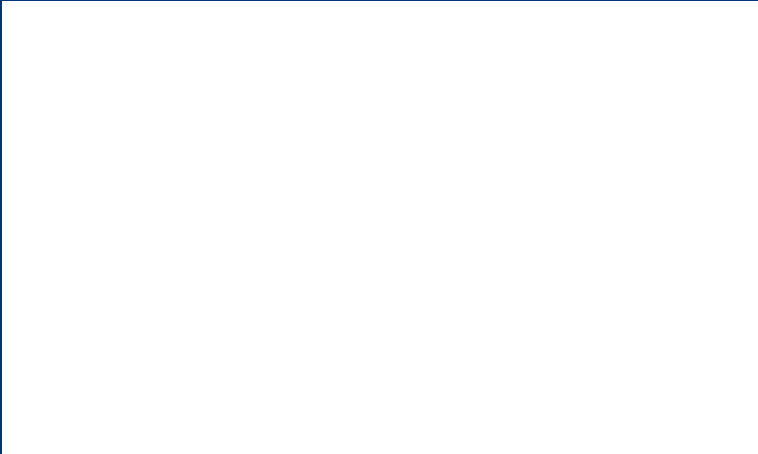
DIGGING EQUIPMENT

	930F	930F DM	936F	939F DM	942F
2600mm short reach arm					
2900mm short reach arm	-	-			
3050 mm arm	-		-	-	-
3200 mm arm	-	-			
Bucket cylinder rod protect	-	-	-		
1.4 m3 general bucket	-	-	-	-	-
1.6 m3 general bucket	-	-	-	-	-
1.8 m3 general bucket	-	-	-	-	-
2.0 m3 general bucket (need 2600mm arm or 2900mm arm)	-	-	-	-	-
Hydraulic quick coupler	-	-	-	-	-

SERVICE AND MAINTENANCE

	930F	930F DM	936F	939F DM	942F
iLink					





Guangxi LiuGong Machinery Co., Ltd.
No. 1 Liutai Road, Liuzhou, Guangxi 545007, PR China
T: +86 772 388 6124 E: overseas@liugong.com
www.liugong.com

Like and follow us:



LG-PB-930F 933F 936F 939F 942F-Stage V-WW-A4-052022-ENG

The LiuGong series of logos herein, including but not limited to word marks, device marks, letter of alphabet marks and combination marks, as the registered trademarks of Guangxi LiuGong Group Co., Ltd. are used by Guangxi LiuGong Machinery Co., Ltd. with legal permission, and shall not be used without permission. Specifications and designs are subject to change without notice. Illustrations and pictures may include optional equipment and may not include all standard equipment. Equipment and options varies by regional availability.